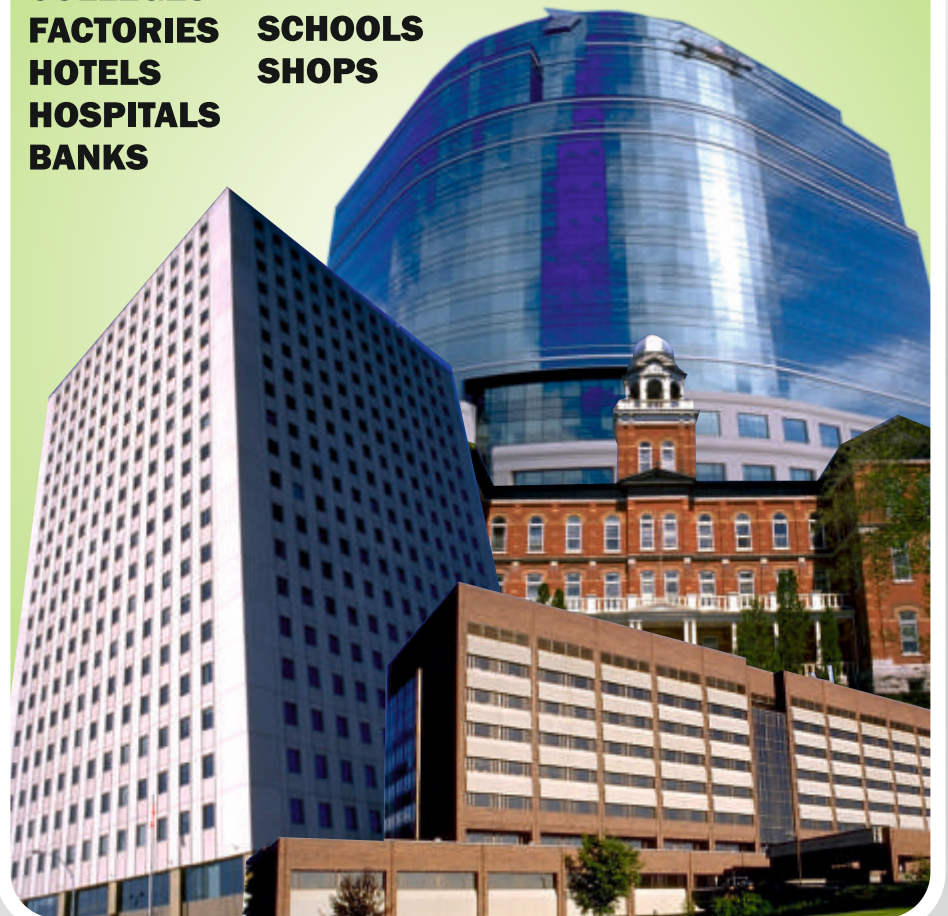


**BUILDING SERVICES ENGINEERS
CONTRACTS MANAGERS, FACILITIES
COMPANIES, H & V MAINTENANCE
HEATING & A/C CONTRACTORS**

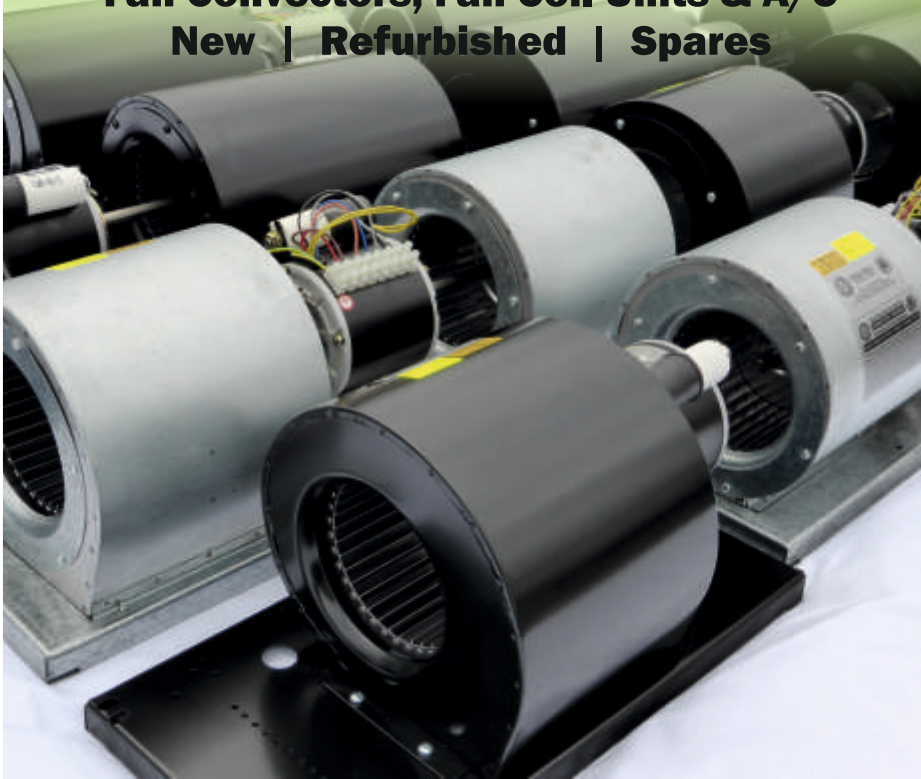
HVAC

AIRPORTS CHURCHES COLLEGES FACTORIES HOTELS HOSPITALS BANKS
LEISURE CENTRES LIBRARIES OFFICES SCHOOLS SHOPS
UNIVERSITIES WAREHOUSES PUBLIC BUILDINGS



FAN DECKS

**Fan Convectors, Fan Coil Units & A/C
New | Refurbished | Spares**



**MOTORS, FANS & BLOWERS
OEM REPLACEMENTS & SPARES FOR
DOMESTIC, COMMERCIAL & INDUSTRIAL
WARM AIR HEATING, VENTILATION & A/C**

BLOWERS

**Domestic, Commercial & Industrial
Warm Air Heaters – inc Old & Obsolete
New | Refurbished | Spares**



MOTORS

**Fan duty for all air movement applications
OEM replacements and direct equivalents
Outputs from 1W to 3KW. Ex-Stock**



POLE STAR
PRODUCTS LIMITED

**All Motors Available Ex-Stock
Next Day Delivery Nationwide
Technical Advice and Assistance
All Parts are Fully Guaranteed
Ask for our Latest Catalogue**



**01526
399 711**

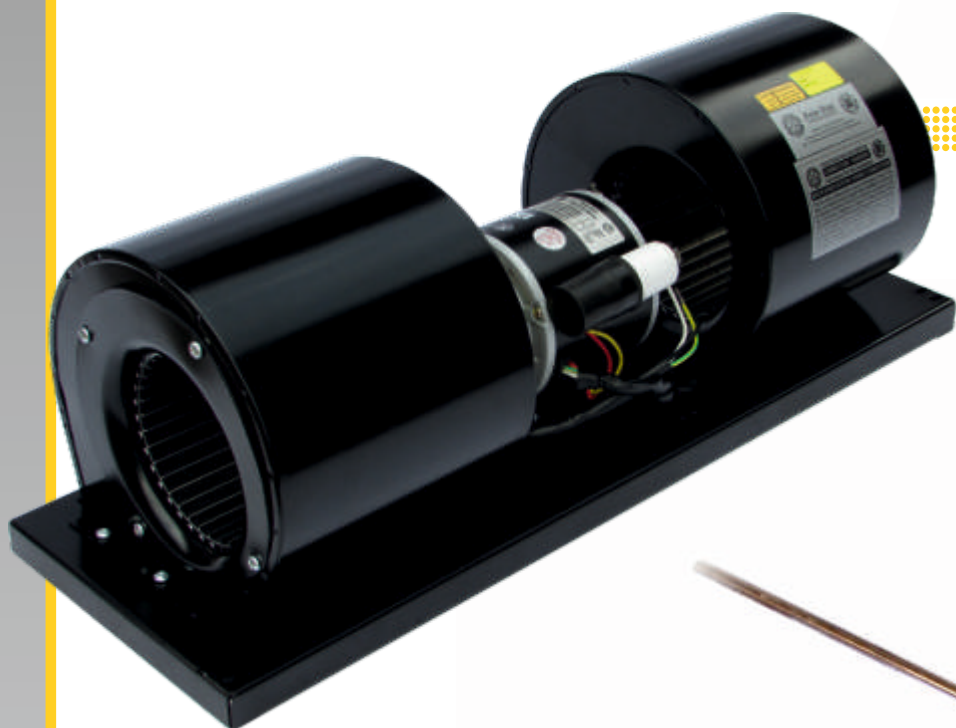
Fan Decks

Pole Star offers a comprehensive service for the Building Services Engineer, Maintenance Firms, Facilities Companies, HVAC Contractors, Electrical Engineers, etc.



New Fan Decks

New fan decks are all made in Lincolnshire
All designs available with 1, 2, 3 or 4 blowers
Exact pattern copies of old and obsolete makes
Quick delivery, any quantity, OEM replacements
Specification generally superior to original deck

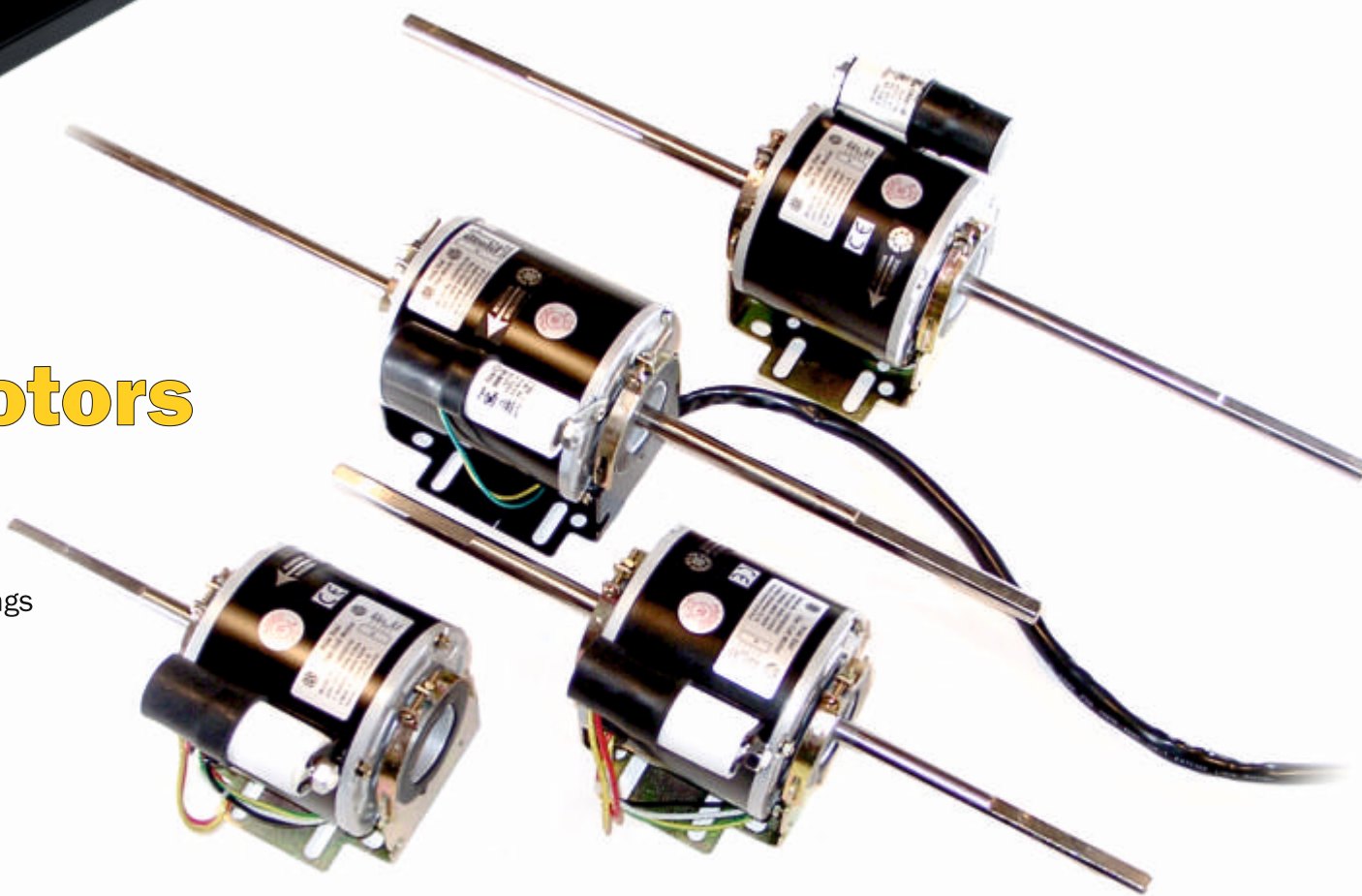


Refurbished Fan Decks

We refurbish all types of fan deck
Including old and obsolete models
Returned in 'good as new' condition
All parts and service work guaranteed
Nationwide site collection and delivery

Fan Coil Motors

Single and double shaft models
PSC or EC BLDC low energy types
Power outputs from 8W to 1250W
1 to 7 run speeds, dual ball bearings
Direct equivalents to OEM models



Nationwide Site Visits

Our Sales Engineer will be pleased to visit your sites to help identify any old and obsolete motors, blowers and fan decks to ensure the correct replacement parts are specified and ordered, provided the numbers involved are worthwhile.

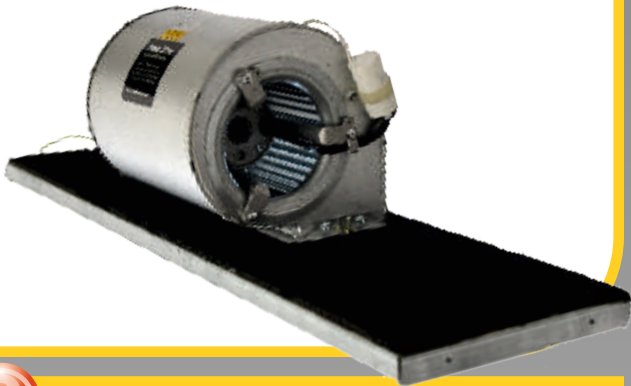


Fan Decks - 1, 2, 3 & 4 Centrifugal Blower Units



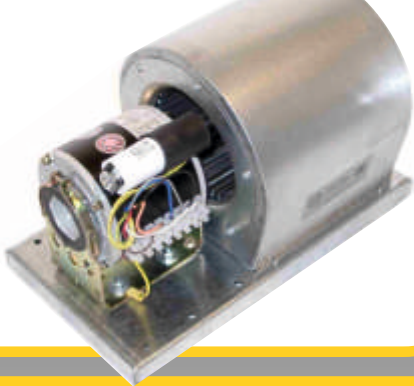
Fan Deck Single Blower (Type A)

Single blower. PSC or EC. 1 – 4 speeds
2 Pole (2300RPM) & 4 Pole (1300RPM)



Fan Deck Single Blower (Type B)

Single blower. 1 x PSC or EC motor
Max air volume 1,000m³/hr or 600cfm



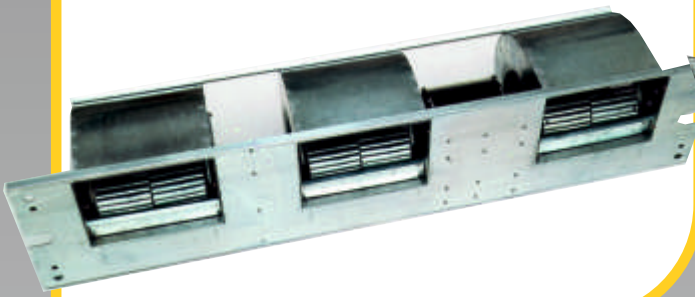
Fan Deck Double Blower (Type C)

Double blower. 1 x PSC or EC motor
Max air volume 3,000m³/hr or 1,800cfm



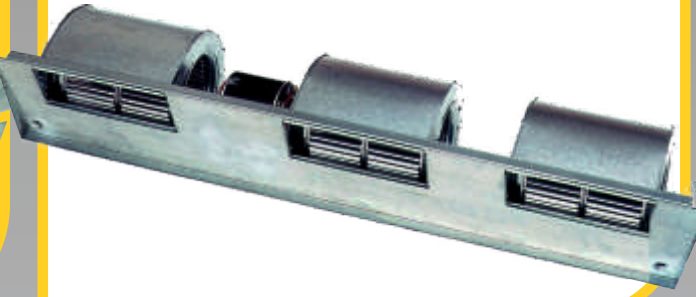
Fan Deck Triple Blower (Type D)

Triple blower. 1 x PSC or EC motor
Max air volume 7,000m³/hr or 4,200cfm



Fan Deck Triple Blower (Type E)

Triple blower. 2 x PSC or EC motors
Max air volume 7,000m³/hr or 4,200cfm



Fan Deck Quad Blower (Type F)

Quad blower. 1 or 2 PSC or EC motors
Max air volume 8,000m³/hr or 4,800cfm



Blower Wheels or Fan Impellers, Double Inlet, Aluminium, Ladder & Tablock Types

Diameters:	96	108	120	133	140	146	160	180	200	215	240	280
Lengths:	100	120	126	146	176	190	196	216	220	226	240	300

General Specifications

Double inlet centrifugal blower units are driven by single phase PSC capacitor motors, usually 4 pole (1300RPM), but sometimes 6 pole (900RPM). 1 to 7 run speeds are available, although 6 speed motors are standard. Made with 1, 2, 3 or 4 blowers, fan decks are manufactured to customer designs and specifications or match old units.

Motors fitted with quality ball bearings.
Longer life and better duty than sleeve.

Cast aluminium end-shields and bolted
construction - not just crimped together.

Aluminium tablock wheels generally fitted.
Ladder or stamped construction an option.

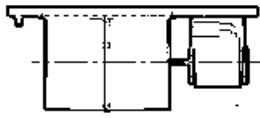
Robust fan trays are made from 16swg,
1.6mm thick galvanised steel or zintec.

Galvanised steel finish is standard or we
can powder coat or paint in any colour.

Fan deck prices vary,
depending on the size,
complexity, specification,
quantity, etc. Fixed prices
always supplied to the
customer for approval
prior to starting any job.



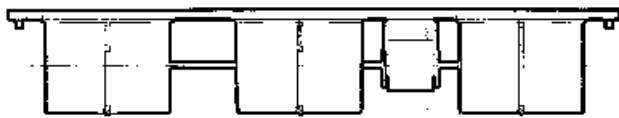
Single Blower - Internal Motor



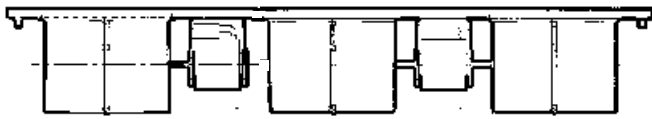
Single Blower - Single Motor



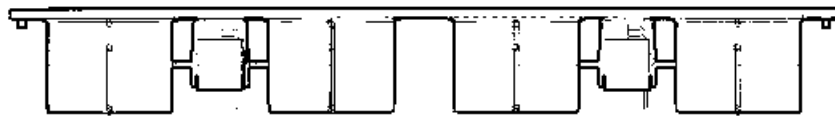
Double Blower - Single Motor



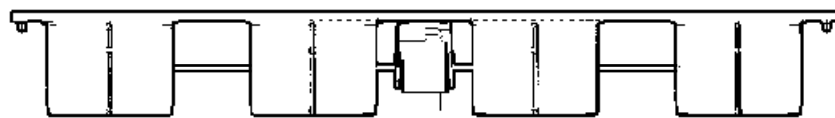
Triple Blower - Single Motor



Triple Blower - Double Motor



Quadruple Blower - Double Motor



Quadruple Blower - Single Motor

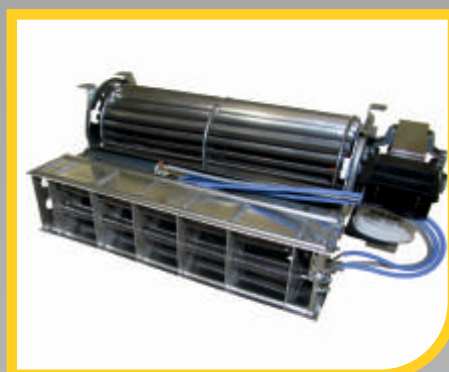
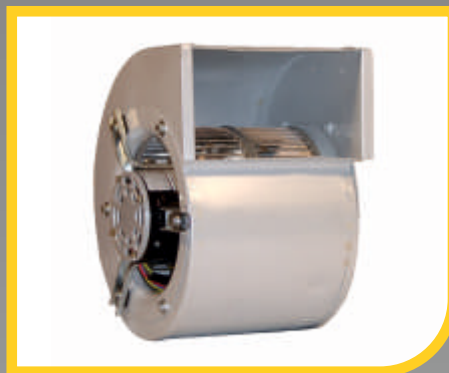
**Pole Star fan
decks are made
with only the
best
components
- often superior
to the OEM fan
deck**

Ref	Blowers	Motors
A	1	1
B	1	1
C	2	1
E	3	1
E	3	2
F	4	2
G	4	1

www.psp.uk.com

tel: 01526 399 711 | fax: 01526 399 744 | email: sales@psp.uk.com

Blowers - Domestic



Blowers - Commercial



HVAC Applications Motors, Fans & Blowers for ...

Air Conditioners, Air Curtains, Air Distribution Fans, Air Handlers, Air Handling Units, Air Mixing Units, Air Sourced Heat Pumps, Burners, Cabinet Unit Heaters, Cassette System Air Conditioners, Commercial Warm Air Heaters, Cooker Hoods, Cross Flow Fans, Direct Fired Unit Heaters, Direct Gas Fired Industrial Air Heaters, Domestic Warm Air Heaters, Dual Fuel Burners, Duct Fans, Electric Heaters, Electric Plinth Heaters, Electric Warm Air Heaters, Environmental Chambers, Exhaust Fans, Fan Coil Units, Fan Convectors, Fireplace Fans, Floor Standing Air Conditioners, Flue Dilution Fans, Fume Extract Fans, Gas Heaters, Heat Pumps, Heat Recovery Units, Hot Water Unit Heaters, Humidifiers, Industrial Warm Air Heaters, Kitchen Canopies, Kitchen Extract Fans, Kitchen Ventilators, Medical Air Conditioners, Oil & Gas Fired Burners, Packaged Air Conditioners, Portable Air Conditioners, Radiant Tube Heaters, Railway Air Conditioners, Roof Exhausters, Roof Top Air Conditioners, Roof Top Ventilators, Room Air Conditioners, Split System Air Conditioners, Unit Ventilators, Ventilation Hoods, VRF Air Conditioners, Wall Mounted Air Conditioners, Warm Air Curtains, Warm Air Heaters, Water Sourced Heat Pumps, Whole House Ventilators, etc.

Blowers - Industrial

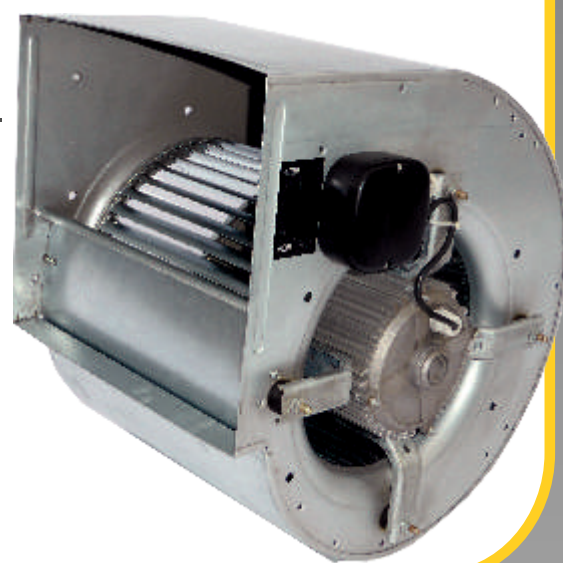
Direct Drive Blowers with Open Ventilated Motors in sizes from:- 7/5 to 10/10

3 x Arms Adjustable Long Blower Mounting Kit Used



Direct Drive Blowers with Extruded Shell Motors in sizes from:- 9/5 to 15/15

4 x Arms Fixed Heavy Duty Blower Mounting Kit Used



Heavy Duty Blowers with External Frame Single, Double or Triple Drive Motors Available

Integral Support Arms Long Life Ball Bearings

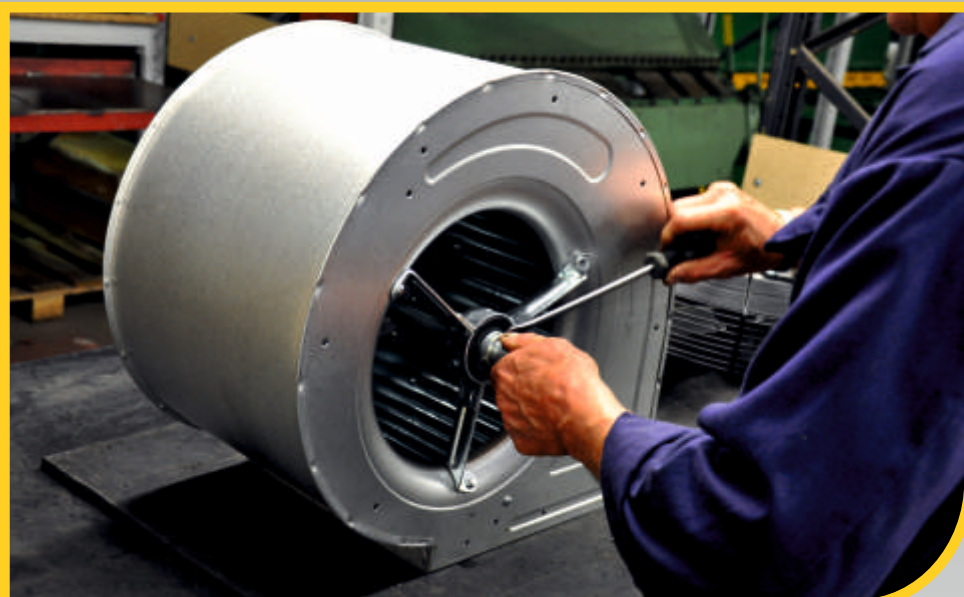


Lighter Duty Blowers Flange or Foot Mounting Sizes from 7/5 to 18/18 Drive Motors Available

Direct Equivalents Standard Dimensions



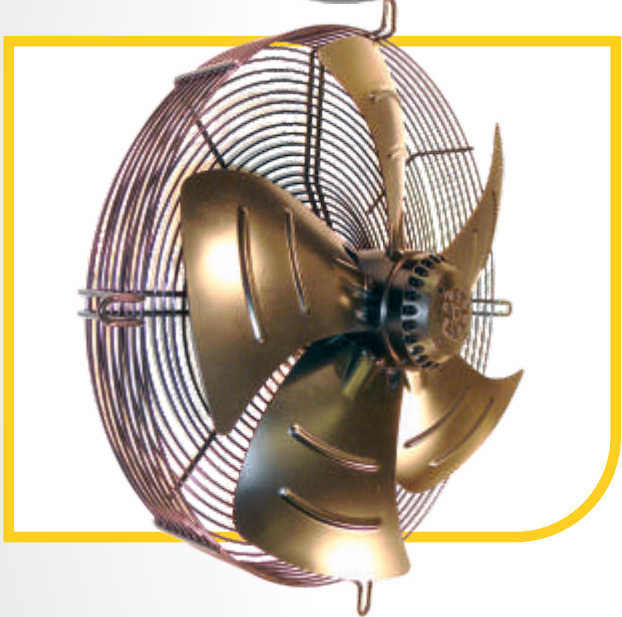
Blowers - Refurbished



Direct Drive and Belt Drive Blowers or Centrifugal Fans
New Blowers Made to Order. Old Blowers Refurbished
Service Parts Available for most Direct Drive Blowers
Comprehensive Refurbishing Service. Blowers Returned
'Good as New'. Can we Quote your Next Fan Repair Job?

Guard Mounted Axial Fans

- Single & Three Phase
- 2 Pole @ 2550RPM
- 4 Pole @ 1350RPM
- 6 Pole @ 900RPM
- 8 Pole @ 680RPM
- Terminal Box or Long Cables
- Sucking or Blowing Airflow
- Flat Guard or Basket Guard
- PSC (Capacitor) or EC Motor
- Industry Standard Dimensions



Industry standard fans comprise a single or three phase external rotor motor with integral sickle shaped steel blade and basket or flat guard

Single speed, 2, 4, 6 & 8 pole models, IP54 enclosure rating, -30'c to +60'c
Fans available as guard mounted, plate mounted, or cased axial assemblies

Fans are supplied with either a terminal box (containing a capacitor for single phase models) or long double insulated multi core supply cable

Sucking and blowing models are available with blade sizes - 200, 250, 300, 315, 330, 350, 380, 400, 420, 450, 500, 550, 600, 630, 700, 800 & 900mm

See the full range on our website or ask us to send you a catalogue

Sizes

200mm
250mm
300mm
315mm
330mm
350mm
380mm
400mm
420mm

Sizes

450mm
500mm
550mm
600mm
630mm
710mm
800mm
900mm

*some models slightly more

shop online @
www.psp.uk.com



Prices shown correct 2016
Net prices, excluding VAT
Subject to review annually
No minimum order or value
Errors & Omissions Excepted



Shipping is £8.50 per parcel - next day delivery
(not guaranteed). Use a timed delivery if urgent .i.e.
9am, 10am or noon. Maximum parcel weight 30Kg.
Pallet charge £50 for 2-3 days or £60 next day.
Highlands & Islands - extra cost, longer delivery

Backward Curved Fan



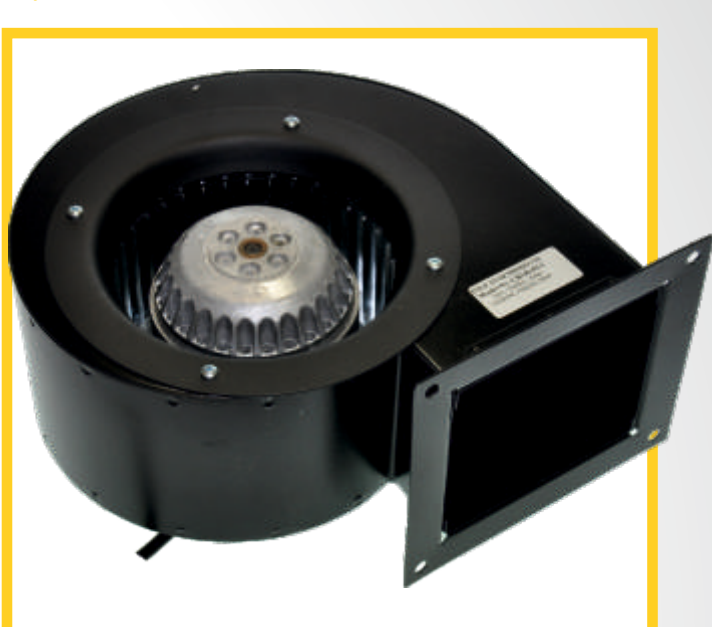
Single inlet, plastic or alloy impeller, driven by an external rotor motor. Single and three phase, 2 & 4 pole, power inputs from 33W to 287W. Insulation class B. Enclosure rating IP23. Ambient temperature range is -25°c to +40°c. Used for medium specific speed applications; so high pressure, medium flow. Centrifugal fans with backward curved blades are used for intake suction and do not need any scroll or housing. Used in a box enclosure they can create a high pressure area around the wheel, discharging the air in any direction through either grilles or ducting.
Diameters: 133mm up to 400mm

In-line Duct Fan



Single inlet, backward curved blade driven by an external rotor motor in a galvanised steel casing. Single phase, 2 pole, single speed, power inputs from 62W to 225W. Insulation class B, IP44, ambient temperature -40°c to +60°c. Used in ducting applications they can create high pressures with good airflow, they have inlet/outlet. Attached by feet or end ring clamps.
Diameters: 100mm up to 315mm

Forward Curved Fan



Single inlet, steel impeller with external rotor motor. Single & three phase. 2, 4 & 6 pole, power inputs from 55W to 210W. Insulation class B. Ambient temperature range is -30°c to +60°c. They need a housing plus an inlet ring to work properly and convert high kinetic energy in the airstream to useful static pressure. The rotation is generally ACW as viewed from the inlet side. Forward curved fans are particularly suited to high flow, low pressure applications.
Diameters: 120 up to 220mm

Blower Prices



Blower Size
7/5
7/7
9/7
9/9
10/8
10/10
12/9
12/12
15/11
15/15
18/18

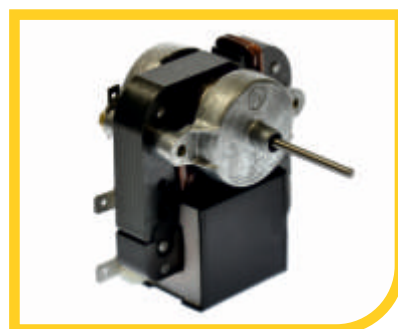
Delivery & Collection

We can delivery and collect from sites nationwide . . .

- Small Orders:** Shipped individually as a parcel with next day delivery
Cost is £8.50 per item.
- Medium Orders:** Shipped together on a pallet with 2 – 3 days delivery
Cost is £50 per pallet.
- Larger Orders:** Company van can deliver and collect bigger quantities
Delivery times and costs depend upon distance, quantity and urgency.



Motors & Accessories



Skeleton, Open or C Frame Motors



A Frame or 33 Range Motors - Flange



TEFC Long Shaft - Flue Dilution Motors



External Rotor Motors - Fan Convectors



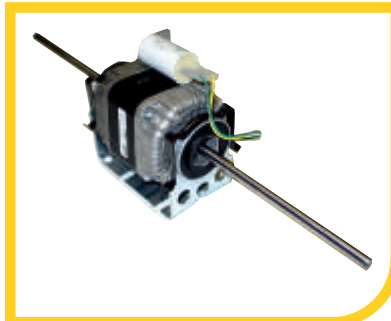
90 Frame Specials - Warm Air Curtains



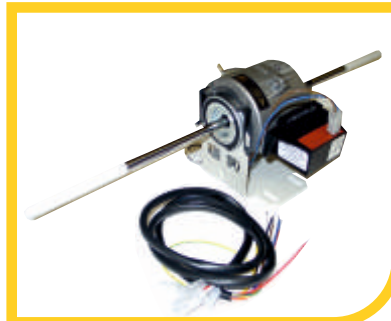
Oil & Gas Burner Motors - Spigot Mount



Oil & Gas Burner Motors - Flange Mount



84 Range Fan Coil Motors



Olmo Syle K31 Fan Coil Motors



48 Range Fan Coil Motors



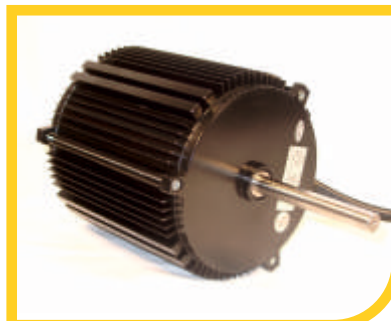
105 Range Blower Motors - Radial Pads



120 Range Blower Motors - Radial Pads



120 range Blower Motors - Aluminium



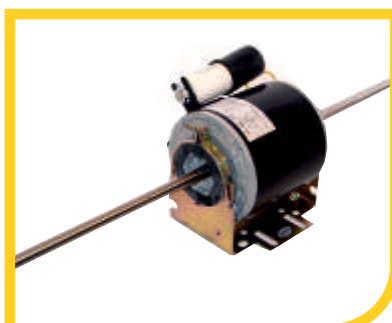
145 Range Blower motors - Aluminium



48 Range Motors - Unit Heater, etc.



105 Range Fan Coil Motors



120 Range Fan Coil Motors



BLDC Fan Coil Motors - Low Energy EC



60 Range or B56 Motors - Mechanical Duty



Industrial Metric Frame Motors - IE2



Single Inlet Impellers - Aluminium



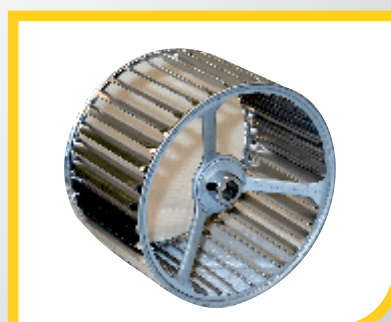
Single Inlet Impellers - Steel



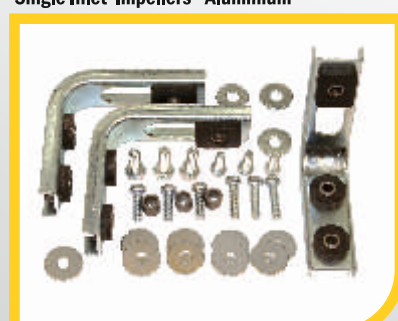
Double Inlet Impellers - Aluminium



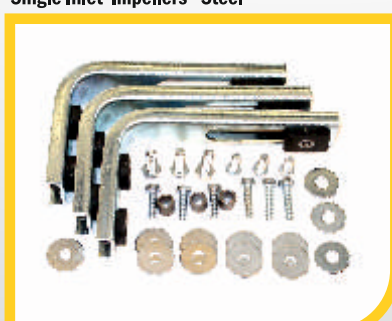
Double Inlet Impellers - Steel



Special Impellers - 2VC146.102/SP



Blower mounting Kit, Small - BMKS



Blower Mounting Kit, Large - BMKL



Mounting Kit Heavy Duty - BMK-HD3



Resilient Mounting Bases - Narrow



Resilient Mounting Bases - Pattern



Triangular Bearing Bracket - PSTBB-1



Spring Shaft Coupling - PSSC-003



Anti Vibration Mounting Rubbers



Shaft Sleeves - Metric & Imperial Sizes



Radial Clamp Bands - 105 & 120mm



Bardney Airfield | Henry Lane | Bardney | Nr. Lincoln | Lincolnshire | LN3 5TJ
tel: 01526 399 711 | fax: 01526 399 744 | email: sales@psp.uk.com



The list of heating equipment manufacturers above should not be considered complete. It is issued for guidance only and includes many companies which are no longer trading, with makes and models, names and brands, which were once familiar, now a part of history. Always use a qualified electrician when replacing electric motors or fans. Call our office if you have any technical questions.

All references to manufacturers names, model or part numbers and any depiction by photographs or drawings are solely for guidance, reference and identification. No connection, endorsement or approval by any manufacturer is either given or implied. The customer is solely responsible for ensuring correct motor suitability in intended application. Errors and omissions excepted.

2016 EDITION