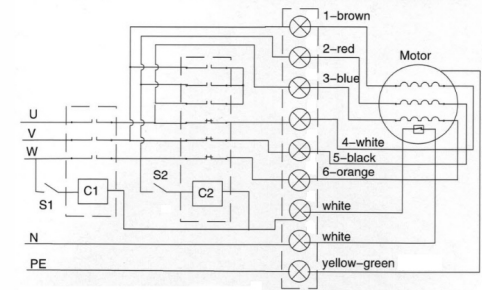
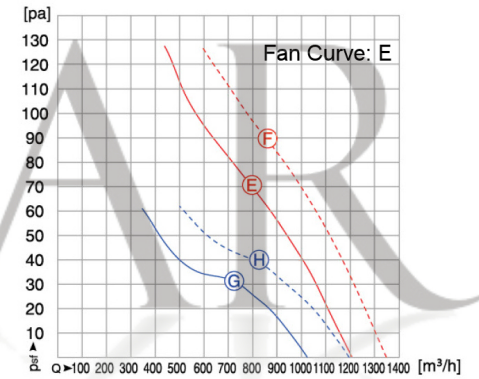


All measurements shown are in millimeters

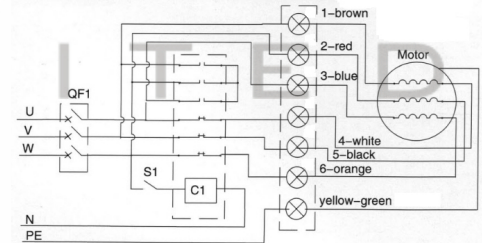
Wiring diagram for fans with thermal protector under three phase Y/Δ connection



C1-Run control touch machine, connect S1, run fan.
C2-Y/Δ Control touch machine, S2 cut, Δ connection; S2 connect, Y connection.



Three phase motor, Y/Δ operate, without thermal protector



QF1-Run control air switch, connect QF1, fan start.
C1-Y/Δ Run control touch machine, cut S1, Δ connection, connect S1; Y connection.

SPECIFICATION					
Motor	PSC	Speed (RPM)	2616	Bearings	Ball
Voltage (V)	380	Motor Protection	Th. Prot.	Weight (Kg)	2.8
Frequency (Hz)	50/60	Insulation Class	B	Air Volume (M³/h)	
Power In/Out (W)	92	Protection Class	IP54	Noise Level (dBA)	68
Current (A)	0.24	Temp. Range	-30 +60	Capacitor (MF)	

POLE STAR
PRODUCTS LIMITED

POLE STAR PRODUCTS LIMITED	
Product Code	GMA3-250S-1
Projection	A4
Angle	Scale:
± 3°	Sheet: 1 of