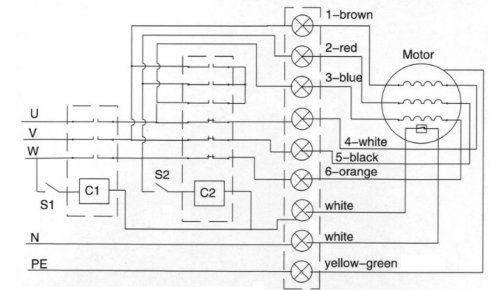
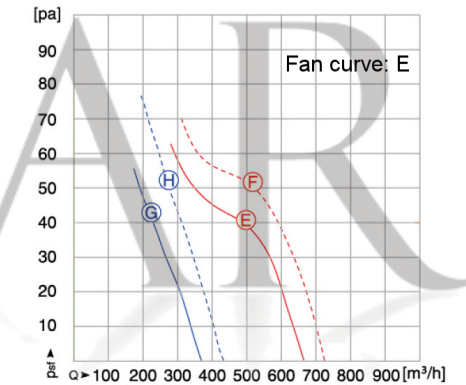


All measurements shown are in millimeters

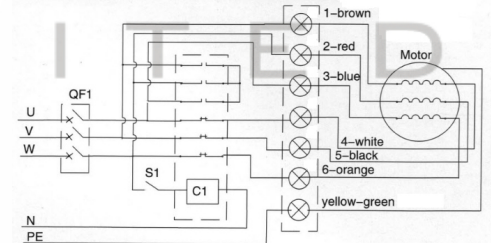
Wiring diagram for fans with thermal protector under three phase Y/Δ connection



C1-Run control touch machine,connect S1,run fan.  
C2-Y/Δ Control touch machine,S2 cut, Δ connection;S2 connect,Y connection.



Three phase motor,Y/Δ operate,without thermal protector



QF1-Run control air switch,connect QF1,fan start.  
C1-Y/Δ Run control touch machine,cut S1, Δ connection,connect S1;Yconnection.

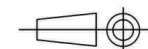
SPECIFICATION					
Motor	PSC	Speed (RPM)	2537	Bearings	Ball
Voltage (V)	380	Motor Protection	Th. Prot.	Weight (Kg)	2.3
Frequency (Hz)	50/60	Insulation Class	B	Air Volume (M³/h)	
Power In/Out (W)	69	Protection Class	IP54	Noise Level (dBA)	66
Current (A)	0.18	Temp. Range	-30 +60	Capacitor (MF)	

**POLE STAR**  
PRODUCTS LIMITED

POLE STAR PRODUCTS LIMITED

Product Code  
**GMA3-200S-1**

Projection  
Angle  
± 3°



A4  
Scale:  
Sheet: 1 of