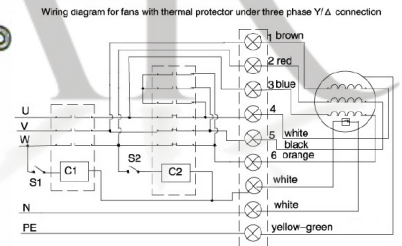
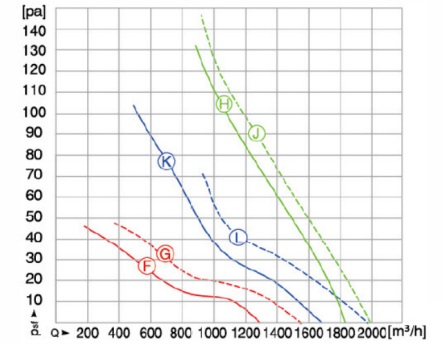
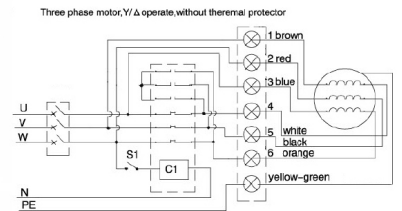


All measurements shown are in millimeters



C1 - Run control touch machine, connect S1, run fan.
C2 - Y/Δ Control touch machine, S2 cut, Δ connection; S2 connect, Y connection.



SPECIFICATION					
Motor	3Ph	Speed (RPM)	2384/2610	Bearings	Ball
Voltage (V)	380	Motor Protection	Th. Prot	Weight (Kg)	3.0
Frequency (Hz)	50/60	Insulation Class	B	Air Volume (M ³ /h)	
Power In/Out (W)	169/196	Protection Class	IP54	Noise Level (dBA)	70/73
Current (A)	0.32/0.33	Temp. Range	-30 +60	See fan curve	H & J

POLE STAR
PRODUCTS LIMITED

POLE STAR PRODUCTS LIMITED	
Product Code	
GMA3-300B-L	
Projection	A4
Angle	Scale:
± 3°	Sheet: 1 of