

Delivered by



2

ROYAL MAIL

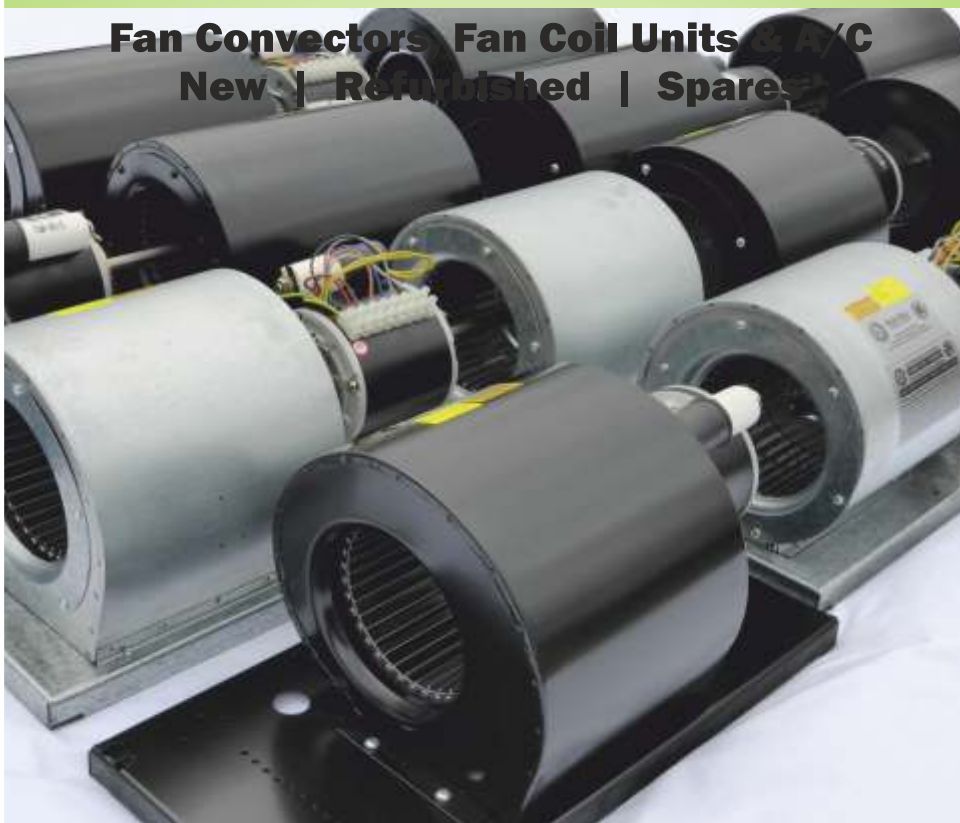
POSTAGE PAID GB  
HQ76651

Return Address:

Bardney Airfield, Henry Lane, Bardney, Nr Lincoln, Lincolnshire, LN3 5TJ

# FAN DECKS

**Fan Convectors, Fan Coil Units & A/C**  
New | Refurbished | Spares



**MOTORS, FANS & BLOWERS**  
**OEM REPLACEMENTS & SPARES FOR**  
**DOMESTIC, COMMERCIAL & INDUSTRIAL**  
**WARM AIR HEATING, VENTILATION & A/C**

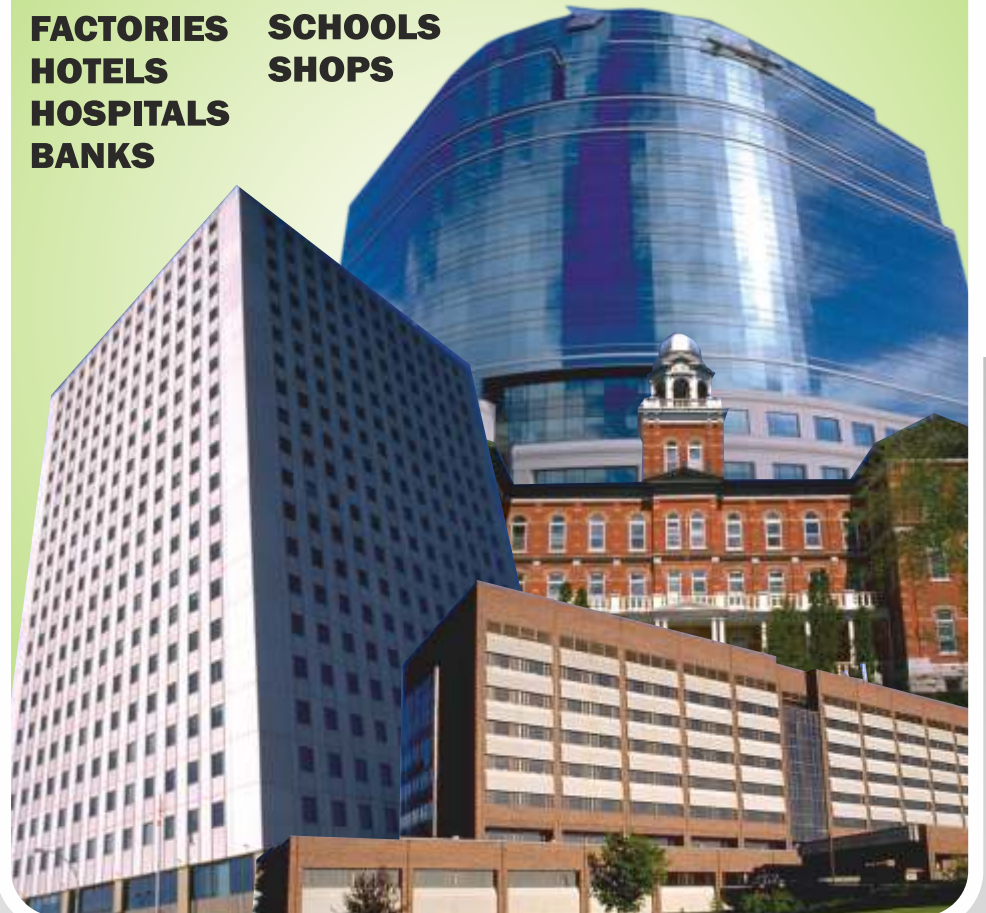
**BUILDING SERVICES ENGINEERS**  
**CONTRACTS MANAGERS, FACILITIES**  
**COMPANIES, H & V MAINTENANCE**  
**HEATING & A/C CONTRACTORS**

# HVAC

**AIRPORTS**  
**CHURCHES**  
**COLLEGES**  
**FACTORIES**  
**HOTELS**  
**HOSPITALS**  
**BANKS**

**LEISURE CENTRES**  
**LIBRARIES**  
**OFFICES**  
**SCHOOLS**  
**SHOPS**

**UNIVERSITIES**  
**WAREHOUSES**  
**PUBLIC BUILDINGS**



# BLOWERS

**Domestic, Commercial & Industrial**  
**Warm Air Heaters – inc Old & Obsolete**  
New | Refurbished | Spares



# MOTORS

**Fan duty for all air movement applications**  
**OEM replacements and direct equivalents**  
**Outputs from 1W to 3KW. Ex-Stock**



**POLE STAR**  
PRODUCTS LIMITED

**All Motors Available Ex-Stock**  
**Next Day Delivery Nationwide**  
**Technical Advice and Assistance**  
**All Parts are Fully Guaranteed**  
**Ask for our Latest Catalogue**



**01526**  
**399 711**

HVAC02



# Fan Decks

**Pole Star** offers a comprehensive service for the Building Services Engineer, Maintenance Firms, Facilities Companies, HVAC Contractors, Electrical Engineers, etc.



## New Fan Decks

New fan decks are all made in Lincolnshire  
All designs available with 1, 2, 3 or 4 blowers  
Exact pattern copies of old and obsolete makes  
Quick delivery, any quantity, OEM replacements  
Specification generally superior to original deck



## Refurbished Fan Decks

We refurbish all types of fan deck  
Including old and obsolete models  
Returned in 'good as new' condition  
All parts and service work guaranteed  
Nationwide site collection and delivery

## Fan Coil Motors

Single and double shaft models  
PSC or EC BLDC low energy types  
Power outputs from 8W to 1250W  
1 to 7 run speeds, dual ball bearings  
Direct equivalents to OEM models



## Nationwide Site Visits

Our Sales Engineer will be pleased to visit your sites to help identify any old and obsolete motors, blowers and fan decks to ensure the correct replacement parts are specified and ordered, provided the numbers involved are worthwhile.



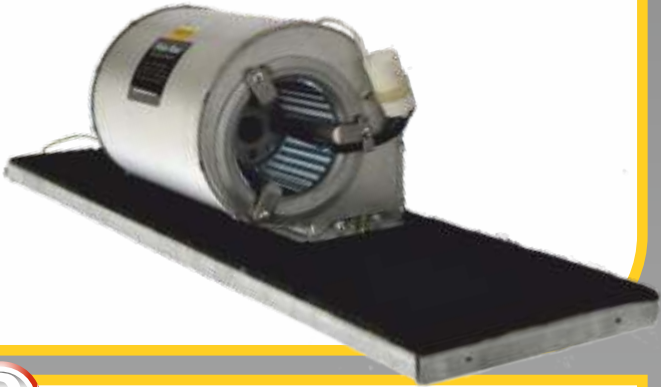


# Fan Decks - 1, 2, 3 & 4 Centrifugal Blower Units



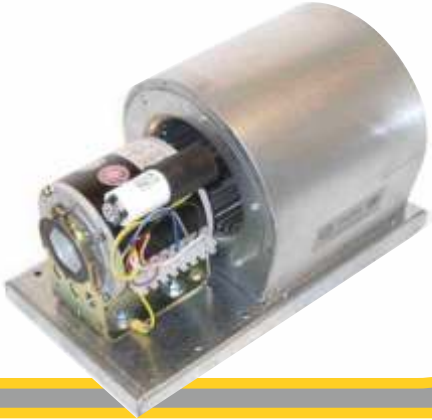
## Fan Deck Single Blower (Type A)

Single blower. PSC or EC. 1 – 4 speeds  
2 Pole (2300RPM) & 4 Pole (1300RPM)



## Fan Deck Single Blower (Type B)

Single blower. 1 x PSC or EC motor



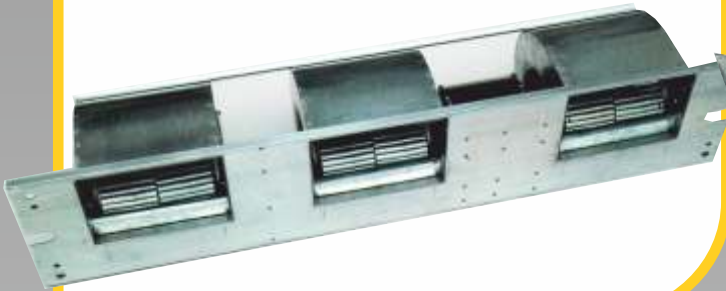
## Fan Deck Double Blower (Type C)

Double blower. 1 x PSC or EC motor



## Fan Deck Triple Blower (Type D)

Triple blower. 1 x PSC or EC motor



## Fan Deck Triple Blower (Type E)

Triple blower. 2 x PSC or EC motors



## Fan Deck Quad Blower (Type F)

Quad blower. 1 or 2 PSC or EC motors



### New Deck

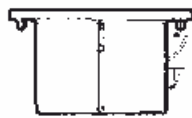
| Size      | Power   |         |         |         |         |         |         | Scroll & wheel |
|-----------|---------|---------|---------|---------|---------|---------|---------|----------------|
|           | 35W     | 55W     | 75W     | 100W    | 180W    | 210W    | 370W    |                |
| Single    | £165.80 | £167.44 | £169.58 | £186.59 | £189.40 | £190.40 | N/A     | 133 x 146      |
| Double    | £235.67 | £237.59 | £239.73 | £256.74 | £259.55 | £260.55 | £269.67 | 133 x 146      |
| Treble 1M | £383.82 | £385.46 | £387.60 | £404.61 | £407.42 | £408.42 | £417.54 | 146 x 216      |
| Treble 2M | £395.46 | £398.76 | £403.03 | £437.07 | £442.68 | £444.67 | £462.93 | 146 x 216      |
| Quad 1M   | £523.00 | £526.30 | £530.57 | £564.61 | £570.22 | £572.21 | £590.47 | 146 x 216      |
| Quad 2M   | £481.21 | £484.51 | £488.78 | £522.82 | £528.43 | £530.42 | £548.68 | 146 x 216      |

### Refurb Deck

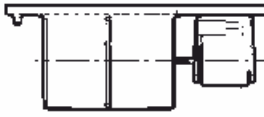
| Size      | Power   |         |         |         |         |         |         | Scroll & wheel |
|-----------|---------|---------|---------|---------|---------|---------|---------|----------------|
|           | 35W     | 50W     | 75W     | 100W    | 180W    | 210W    | 370W    |                |
| Single    | £147.16 | £148.80 | £150.97 | £167.95 | £170.76 | £171.76 | £180.88 | 133 x 146      |
| Double    | £201.02 | £202.66 | £204.83 | £221.81 | £224.62 | £225.62 | £234.74 | 133 x 146      |
| Treble 1M | £288.04 | £289.68 | £291.82 | £308.83 | £311.64 | £312.64 | £321.76 | 146 X 216      |
| Treble 2M | £304.56 | £307.82 | £312.10 | £330.10 | £351.75 | £353.74 | £372.00 | 146 X 216      |
| Quad 1M   | £414.72 | £421.83 | £427.57 | £440.56 | £443.39 | £444.39 | £453.51 | 146 X 216      |
| Quad 2M   | £319.73 | £328.46 | £334.60 | £368.64 | £374.25 | £376.24 | £394.50 | 146 X 216      |

- Motors fitted with quality ball bearings. Longer life and better duty than sleeve.
- Cast aluminium end-shields and bolted construction - not just crimped together.
- Aluminium tablock wheels generally fitted. Ladder or stamped construction an option.
- Robust fan trays are made from 16swg, 1.6mm thick galvanised steel or zintec.
- Galvanised steel finish is standard or we can powder coat or paint in any colour.

Fan deck prices vary, depending on the size, complexity, specification, quantity, etc. Fixed prices always supplied to the customer for approval prior to starting any job.



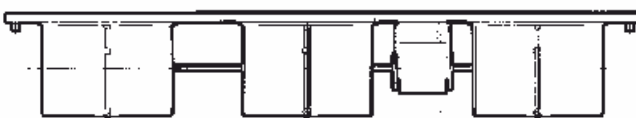
Single Blower - Internal Motor



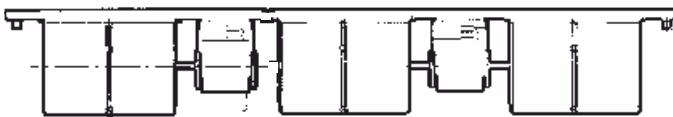
Single Blower - Single Motor



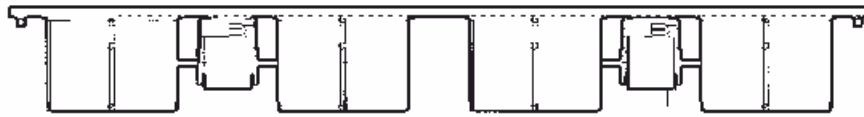
Double Blower - Single Motor



Triple Blower - Single Motor



Triple Blower - Double Motor



Quadruple Blower - Double Motor



Quadruple Blower - Single Motor

**Pole Star fan decks are made with only the best components - often superior to the OEM fan deck**

**www.psp.uk.com**

**tel:** 01526 399 711 | **fax:** 01526 399 744 | **email:** sales@psp.uk.com



## Blowers - Domestic



## Blowers - Commercial



### HVAC Applications Motors, Fans & Blowers for ...

Air Conditioners, Air Curtains, Air Distribution Fans, Air Handlers, Air Handling Units, Air Mixing Units, Air Sourced Heat Pumps, Burners, Cabinet Unit Heaters, Cassette System Air Conditioners, Commercial Warm Air Heaters, Cooker Hoods, Cross Flow Fans, Direct Fired Unit Heaters, Direct Gas Fired Industrial Air Heaters, Domestic Warm Air Heaters, Dual Fuel Burners, Duct Fans, Electric Heaters, Electric Plinth Heaters, Electric Warm Air Heaters, Environmental Chambers, Exhaust Fans, Fan Coil Units, Fan Convectors, Fireplace Fans, Floor Standing Air Conditioners, Flue Dilution Fans, Fume Extract Fans, Gas Heaters, Heat Pumps, Heat Recovery Units, Hot Water Unit Heaters, Humidifiers, Industrial Warm Air Heaters, Kitchen Canopies, Kitchen Extract Fans, Kitchen Ventilators, Medical Air Conditioners, Oil & Gas Fired Burners, Packaged Air Conditioners, Portable Air Conditioners, Radiant Tube Heaters, Railway Air Conditioners, Roof Exhausters, Roof Top Air Conditioners, Roof Top Ventilators, Room Air Conditioners, Split System Air Conditioners, Unit Ventilators, Ventilation Hoods, VRF Air Conditioners, Wall Mounted Air Conditioners, Warm Air Curtains, Warm Air Heaters, Water Sourced Heat Pumps, Whole House Ventilators, etc.



## Blowers - Industrial

Direct Drive Blowers with Open Ventilated Motors in sizes from:- 7/5 to 10/10

3 x Arms Adjustable Long Blower Mounting Kit Used



Direct Drive Blowers with Extruded Shell Motors in sizes from:- 9/5 to 15/15

4 x Arms Fixed Heavy Duty Blower Mounting Kit Used



Heavy Duty Blowers with External Frame Single, Double or Triple Drive Motors Available

Integral Support Arms Long Life Ball Bearings



Lighter Duty Blowers Flange or Foot Mounting Sizes from 7/5 to 18/18 Drive Motors Available

Direct Equivalents Standard Dimensions



## Blowers - Refurbished



**Direct Drive and Belt Drive Blowers or Centrifugal Fans**  
**New Blowers Made to Order. Old Blowers Refurbished**  
**Service Parts Available for most Direct Drive Blowers**  
**Comprehensive Refurbishing Service. Blowers Returned**  
**'Good as New'. Can we Quote your Next Fan Repair Job?**

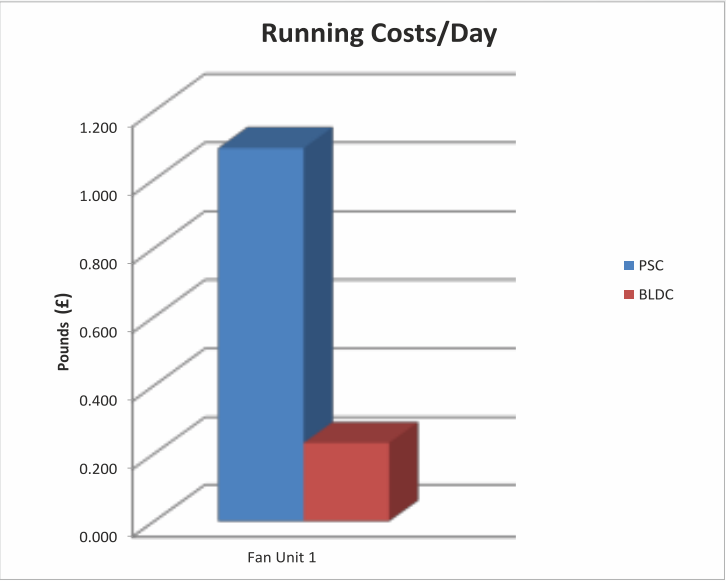
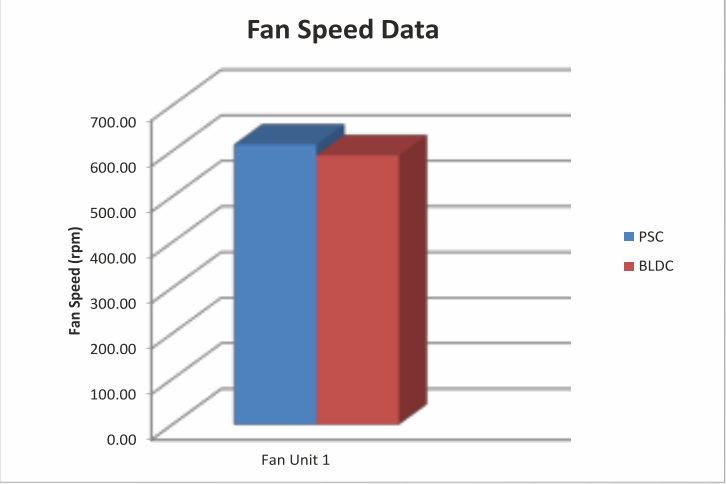
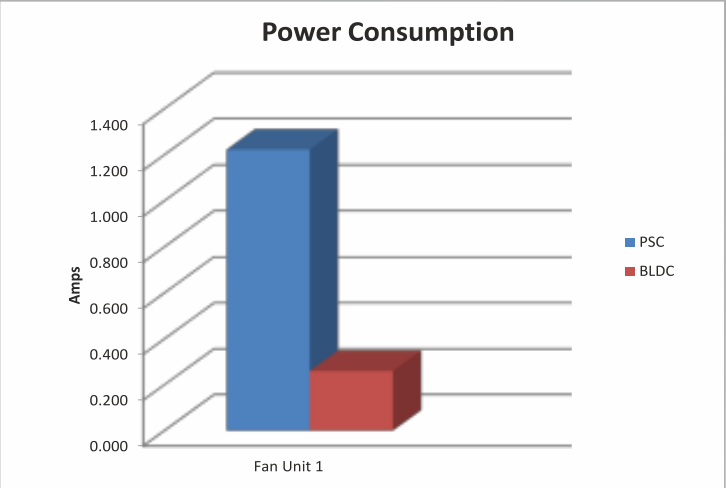


# Benefits of EC Motors

Our speciality is being able to manufacture new decks of any quantity to your specification. Our facilities enable us to replace old and obsolete decks which would otherwise require a complete new system installation.



shop online @  
[www.psp.uk.com](http://www.psp.uk.com)



**NOTE:**  
Based on an 180watt motor  
being used 24hrs a day

| Power      |       |       |
|------------|-------|-------|
| AMPS       | PSC   | BLDC  |
| Fan Unit 1 | 1.223 | 0.260 |

| Fan Speed (rpm) |        |        |
|-----------------|--------|--------|
| Fan Speed (rpm) | PSC    | BLDC   |
| Fan Unit 1      | 614.25 | 590.75 |

| Cost/Day   |       |       |
|------------|-------|-------|
| Cost (£)   | PSC   | BLDC  |
| Fan Unit 1 | 1.091 | 0.232 |

|                   |   | PSC    |   | BLDC  |  |
|-------------------|---|--------|---|-------|--|
| 180 Double Units: | £ | 196.46 | £ | 41.78 |  |
|                   | £ | -      | £ | -     |  |
| Total Daily Cost: | £ | 196.46 | £ | 41.78 |  |

Annual Cost (365 days per year): £ 71,708.13 £ 15,250.81



Prices shown correct 2017  
Net prices, excluding VAT  
Subject to review annually  
No minimum order or value  
Errors & Omissions Excepted



Shipping is £8.50 per parcel - next day delivery  
(not guaranteed). Use a timed delivery if urgent .i.e.  
9am, 10am or noon. Maximum parcel weight 30Kg.  
Pallet charge £50 for 2-3 days or £60 next day.  
Highlands & Islands - extra cost, longer delivery



## Backward Curved Fan



Single inlet, plastic or alloy impeller, driven by an external rotor motor. Single and three phase, 2 & 4 pole, power inputs from 33W to 287W. Insulation class B. Enclosure rating IP23. Ambient temperature range is -25°C to +40°C. Used for medium specific speed applications; so high pressure, medium flow. Centrifugal fans with backward curved blades are used for intake suction and do not need any scroll or housing. Used in a box enclosure they can create a high pressure area around the wheel, discharging the air in any direction through either grilles or ducting.  
**Diameters:** 133mm up to 400mm

## In-line Duct Fan



Single inlet, backward curved blade driven by an external rotor motor in a galvanised steel casing. Single phase, 2 pole, single speed, power inputs from 62W to 225W. Insulation class B, IP44, ambient temperature -40°C to +60°C. Used in ducting applications they can create high pressures with good airflow, they have inlet/outlet. Attached by feet or end ring clamps.  
**Diameters:** 100mm up to 315mm

## Forward Curved Fan



Single inlet, steel impeller with external rotor motor. Single & three phase. 2, 4 & 6 pole, power inputs from 55W to 210W. Insulation class B. Ambient temperature range is -30°C to +60°C. They need a housing plus an inlet ring to work properly and convert high kinetic energy in the airstream to useful static pressure. The rotation is generally ACW as viewed from the inlet side. Forward curved fans are particularly suited to high flow, low pressure applications.  
**Diameters:** 120 up to 220mm

## Blower Prices



| Blower Size | Belt Drive | Direct Drive |
|-------------|------------|--------------|
| 7/5         | £189.98    | From £120.37 |
| 7/7         | £109.32    | From £124.66 |
| 9/7         | £113.24    | From £139.20 |
| 9/9         | £113.82    | From £146.92 |
| 10/8        | £122.83    | From £182.32 |
| 10/10       | £125.83    | From £207.24 |
| 12/9        | £152.88    | From £246.75 |
| 12/12       | £156.63    | From £251.25 |
| 15/11       | £176.15    | N/A          |
| 15/15       | £182.16    | From £582.15 |
| 18/13       | £200.19    | N/A          |
| 18/18       | £207.70    | N/A          |

## Delivery & Collection

We can delivery and collect from sites nationwide . . .

**Small Orders:** Shipped individually as a parcel with next day delivery  
Cost is £8.50 per item.

**Medium Orders:** Shipped together on a pallet with 2 – 3 days delivery  
Cost is £50 per pallet.

**Larger Orders:** Company van can deliver and collect bigger quantities  
Delivery times and costs depend upon distance, quantity and urgency.





# Motors & Accessories



Skeleton, Open or C Frame Motors



A Frame or 33 Range Motors - Flange



TEFC Long Shaft - Flue Dilution Motors



External Rotor Motors - Fan Convectors



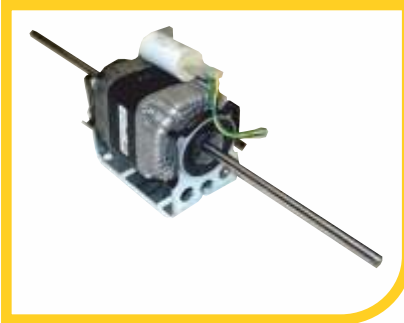
90 Frame Specials - Warm Air Curtains



Oil & Gas Burner Motors - Spigot Mount



Oil & Gas Burner Motors - Flange Mount



84 Range Fan Coil Motors



Olmo Syle K31 Fan Coil Motors



48 Range Fan Coil Motors



105 Range Blower Motors - Radial Pads



120 Range Blower Motors - Radial Pads



120 range Blower Motors - Aluminium



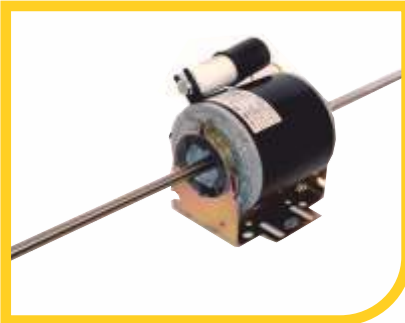
145 Range Blower motors - Aluminium



48 Range Motors - Unit Heater, etc.



105 Range Fan Coil Motors



120 Range Fan Coil Motors



BLDC Fan Coil Motors - Low Energy EC



60 Range or B56 Motors - Mechanical Duty



Industrial Metric Frame Motors - IE2



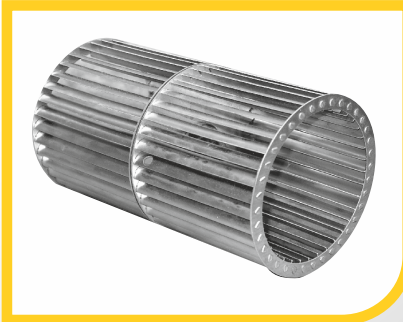
Single Inlet Impellers - Aluminium



Single Inlet Impellers - Steel



Double Inlet Impellers - Aluminium



Double Inlet Impellers - Steel



Special Impellers - 2VC146.102/SP



Blower mounting Kit, Small - BMKS



Blower Mounting Kit, Large - BMKL



Mounting Kit Heavy Duty - BMK-HD3



Resilient Mounting Bases - Narrow



Resilient Mounting Bases - Pattern



Triangular Bearing Bracket - PSTBB-1



Spring Shaft Coupling - PSSC-003



Anti Vibration Mounting Rubbers



Shaft Sleeves - Metric & Imperial Sizes



Radial Clamp Bands - 105 & 120mm



Bardney Airfield | Henry Lane | Bardney | Nr. Lincoln | Lincolnshire | LN3 5TJ  
tel: 01526 399 711 | fax: 01526 399 744 | email: sales@psp.uk.com



The list of heating equipment manufacturers above should not be considered complete. It is issued for guidance only and includes many companies which are no longer trading, with makes and models, names and brands, which were once familiar, now a part of history. Always use a qualified electrician when replacing electric motors or fans. Call our office if you have any technical questions.

All references to manufacturers names, model or part numbers and any depiction by photographs or drawings are solely for guidance, reference and identification. No connection, endorsement or approval by any manufacturer is either given or implied. The customer is solely responsible for ensuring correct motor suitability in intended application. Errors and omissions excepted.

2017 EDITION