

Motors & fans that fit inside...

Delivered by



ROYAL MAIL

POSTAGE PAID GJ
102/6957

Return Address:

Bardney Airfield | Henry Lane | Bardney | Lincolnshire | LN3 5TJ



Electric Motors | Fans & Blowers | Spares & Replacements | OEM Specials & Equivalents

SHOP online at

www.psp.uk.com

Spares For...

Air Conditioners | Blast Coolers | Chillers | Condensers | Bakery Cases | Bar Refrigeration
Beer Coolers | Beverage Dispensers | Bottle Coolers | Carbonators | Cellar Cooling | Cooker Hoods
Dehumidifiers | Evaporators | Freezer Units | Fan Coils | Heat Pumps | Ice Machines
Commercial Ovens | Supermarket Display Cases & Counters | Water Coolers . . .

Synchronous Valve Motor



Geared synchronous valve motor, 5RPM, 6W, 230V, used in many different central heating systems.

24 Range

(Skeleton Motors)



Open frame skeleton type shaded pole motors. 220/240V, 2 pole (2500RPM), class F insulation, fan hub or plain shaft, front or rear fixings, pedestal brackets, etc.

33 Range



Can construction. 4W to 70W, 2 or 4 pole, fan hub or plain shaft, totally enclosed or open ventilated body, or totally enclosed fan cooled models for mechanical duty applications.

84 Range



Square cast aluminium endshields. 5W to 45W, 2 or 4 pole, fan hub or plain shaft, totally enclosed or open ventilated body, front, rear or side fixings. Shaded pole and PSC capacitor.

Energy Saving ECFM



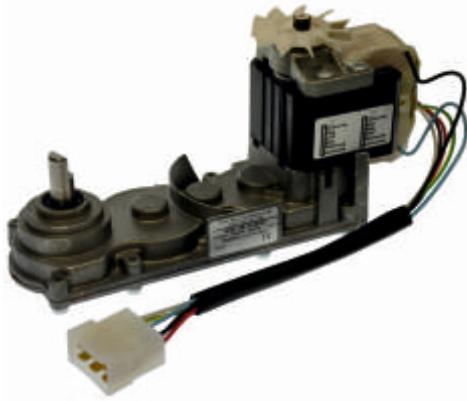
Energy saving motor. 7W to 24W. Guard, grid or pedestal bracket mounting. Class B or H insulation. 65%+ efficiency. Multi blade or blade specific models. OEM plugs available.

External Rotor Motors



Fitted to 100mm dia. cross flow blowers in fan convectors. 4 pole, 30W & 50W models, ventilated body, single speed, 4 x tapped mounting holes at shaft end, mechanical duty.

Gearbox Motor



Shaded pole motor, dual voltage, 33-38RPM, 53W to 70W. Class B insulation. With or without cooling fan. Direct OEM replacements in slush machines.

Oil/Gas Burner Motors



PSC capacitor motors, 2 pole (2800RPM), 50W to 250W. Class B insulation, mechanical duty. Pump drive coupling option, (32mm/54mm). 2 or 4 lug flanges. OEM specials & equivalents.

Radial Mount

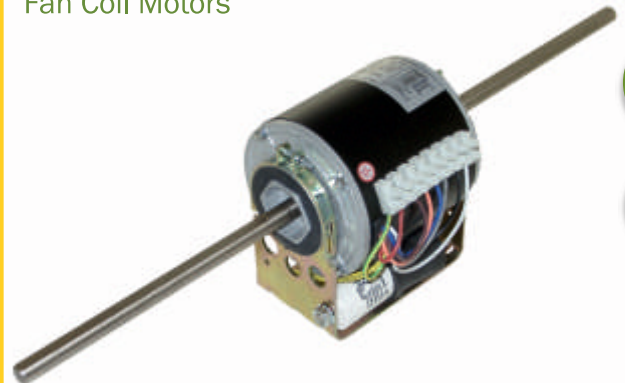
Blower Motors



Body diameters include 105, 120, 145mm, etc. 6W to 1100W. Steel shell or extruded aluminium. Single or three speeds. 3 or 4 mounting pads or slots. Uses a blower mounting kit.

Resilient Mount

Fan Coil Motors



Single & double shaft models. Choice of diameter and length. 13W to 1250W. 1 to 7 run speeds. 4 pole (1300RPM) & 6 pole (900RPM). PSC & BLDC designs. Cables or terminal strip.

60 Range (B56 Frame)



125W to 990W. Resilient base, foot, radial pads or end-shield mounts. 2, 4 & 6 pole. Split phase, cap start cap run, cap start induction run, three phase. Drip proof or totally enclosed.

Industrial Electric Motors (Metric Frame)



1PH & 3PH. 0.18KW to 3KW. 63, 71, 80, 90, 100, 112 & 132 frame 2, 4 & 6 pole. B3, B5 & B14 mounts. Class F. SKF ball bearings. Phase insulation. IP55. TEFC aluminium body.

WE CAN HELP IF YOU GIVE US...

- Make & model of unit
- Motor or fan part number
- Description with sizes
- Photo from your mobile

Carbonator Pump Motors



PSC capacitor motor. 180W, 4 pole (1250RPM), ventilated body, intermittent or continuous mechanical duty. Pump drive coupling with cross cut shaft.

Single Shaft Resilient Mount



PSC capacitor motors. 4 & 6 pole. 15W to 550W. Class B insulation. Resilient base mounting. Single and three phase. Used in condensers, coolers, unit heaters, etc.

Pedestal Mount Fan



Shaded pole motors. Fan blade diameters 88, 130, 154, 172, 200, 230, 254 & 300mm. 2 & 4 pole. Straight leg or V form or angle brackets with choice of heights and fixings holes.

Oven Fans



Shaded pole motors. 36W to 56W. 2 pole (2100RPM). Class H. High temperature bearings. Heat sink cooling fan on shaft. 150 & 160mm diameter paddle blade. Mounting plate or arms.

Compact Axial Fans



12 & 24V, 115 & 240V. AC, DC & EC. Dual voltage. Reversible option. 2 pole (2700RPM). Fan Casings 50mm to 180mm square, 20mm to 90mm deep. Class B or F insulation. -40°C to +65°C.

Ring Mounted Fans



Shaded pole and EC fans. Metal or plastic parts. Fan blades 96, 154, 165, 172, 200, 230, 254 & 300mm. Sucking or blowing airflow. Pitch angles 11° to 34°. Long cable or OEM plug fitted.

www.psp.uk.com

tel: 01526 399 711 | **fax:** 01526 399 744 | **email:** sales@psp.uk.com

Grid Mounted Fans



Shaded pole and EC fans. Metal or plastic parts. Fan blades 96, 154, 165, 172, 200, 230, 254 & 300mm. Sucking or blowing airflow. Pitch angles 11' to 34'. Long cable or OEM plug fitted.

Backward Curved Fans



External rotor motor, PSC capacitor. 1PH, 3PH & EC. Metal or plastic impellers. 2 pole (2550RPM) & 4 pole (1350RPM). Diameters: 133mm to 355mm. Class B. IP54. -30'c to +60'c.

Forward Curved Fans



External rotor motor, PSC capacitor type. Single phase. Single speed. Metal tablock impeller. 2 pole (2550RPM). Diameter: 133mm. Class B. IP54 enclosure. -30'c to +60'c.

Guard Mounted Axial Fans



External rotor motor, PSC capacitor. Sucking & blowing airflow. 1PH & 3PH. 2 pole (2700RPM), 4 pole (1350RPM), 6 pole (920RPM) & 8 pole (680RPM). 175mm to 900mm.

EC Guard Mounted Axial Fans



ECM high efficiency motor. Sucking airflow. Diameters: 200, 250, 300, 315, 350, 400 & 450mm. Class B. IP54. 450mm long cable. 1310RPM to 3050RPM. -25'c to +60'c.

Plate Mounted Axial Fans



External rotor motor, PSC capacitor. Sucking & blowing airflow. 1PH & 3PH. 2 pole (2700RPM), 4 pole (1350RPM), 6 pole (920RPM) & 8 pole (680RPM). 250mm to 900mm.

Account Holders get **25%** discount.
OPEN AN ACCOUNT TODAY - and start saving!

Cased Axial Fans



Short cased axial fans. Single & three phase. 2 pole (2500RPM), 4 pole (1350RPM), 6 pole (950RPM), Diameters: 250mm to 630mm. Class F insulation. IP54. Speed controllable. Terminal box.

In-line Duct Fans



External rotor motor, perm. split capacitor, single phase, 100mm up to 315mm diameter spigots, 2 pole (2550RPM), Class B insulation, IP44., galv. steel casing.

Mixed Flow Fans



Thermo-plastic in-line duct fans or pipeline fans. Shaded pole motor, two speeds, controllable with flying leads. 100mm diameter. 2 band clip fixings. Thermal overload protection Timer optional.

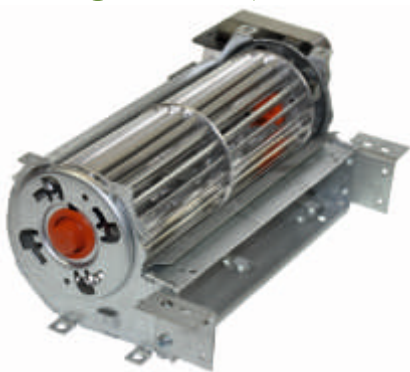
Stove Fans



Eco friendly heat powered fan using in-built thermo-electric module driving four blade anodised aluminium blade. Silent operation and efficient warm air circulation. Black or copper blade colour.

Crossflow Blowers

Single (AKA Tangential Fans)



Shaded pole motors. Single speed. 2 pole (2500RPM), Class B & F. Impeller diameters: 30, 45 & 60mm. Lengths: 60, 90, 120, 180, 240, 270, 300, 360, 420, 480, 550 & 610mm. 0°C to +60°C.

Crossflow Blowers

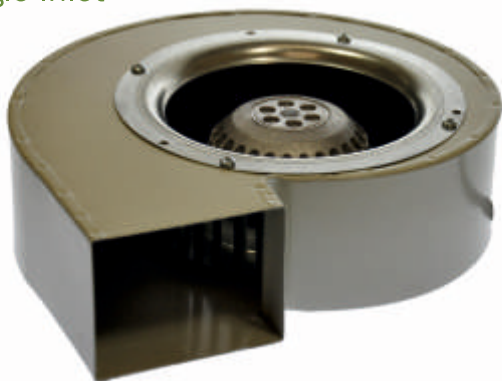
Double (AKA Tangential Fans)



Shaded pole motors. Single speed. 2 pole (2500RPM). Class B & F. Impeller diameters: 30, 45 & 60mm. Lengths: 90, 120, 180, 240, 270, 300 & 360mm. 0°C to +60°C. OEM mounting brackets.

Centrifugal Blower

Single Inlet



Single phase, shaded pole or PSC capacitor motor. 2 pole (1300-2480RPM). Aluminium or plastic housing. Class B & F. Wheel diameters: 55, 70, 82, 100, 120, 140, 160 & 180mm. -20°C to +40°C.

Centrifugal Blower

Double Inlet



Single phase, external rotor motor. 2 pole (2300RPM) & 4 pole (1300RPM). 1 to 4 speeds. Class B & F. Wheel diameters: 120, 133 & 146mm. Lengths: 126, 180 & 190mm. Range of mounting flanges.

EC Centrifugal Blower

Double Inlet



Energy saving blower. EC external rotor motor. Class B. Totally enclosed. Variable run speed from low to 1840RPM maximum. Wheel diameter 146mm x 180mm long. -20°C to +30°C. Flange mounting.

Direct Drive Blower



Single & three phase. Sizes from 7/5 to 18/18. 4 pole (1300RPM) & 6 pole (900RPM). Single or three speeds. Foot or flange mounting. Ventilated rolled steel shell or extruded aluminium motor body.

Belt Drive Blower



Single, double or triple blowers. Sizes 7/5 to 18/18. Foot or flange mounting. Lap jointed housings. Steel supporting frames available to order. Drive shaft diameters 20 & 25mm. 10,000 to 60,000m³/hr.

Fan Deck Unit

New or Refurbished

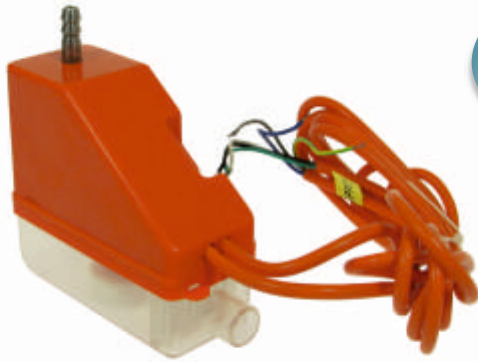


Manufactured with 1, 2, 3 or 4 blowers. New fan decks made to match OEM designs. Any quantity. Old fan decks refurbished. Site delivery & collection. Motors from 13W to 600W. Spare Parts.

Spares For...

Air Curtains | Air Distribution Fans | Air Handlers | Air Mixing Units | Air Source Heat Pumps | Cabinet Heaters | Commercial Warm Air Heaters | Cooker Hoods | Direct Fired Unit Heaters | Domestic Warm Air Heaters | Duct Fans | Electric Heaters | Electric Plinth Heaters | Electric Warm Air Heaters | Environmental Chambers | Exhaust Fans | Fan Coil Units | Fan Convectors | Fireplace Fans | Flue Dilution Fans | Fume Extract Fans | Gas Fired Heaters | Heat Pumps | Heat Recovery Units | Hot Water Unit Heaters | Industrial Warm Air Heaters | In-Line Duct Fans | Kick-space Heaters | Kitchen Ventilators | Mixed Flow Fans | Oil & Gas Fired Burner Motors | Radiant Tube Heaters | Roof Top Ventilators | Smoke Extract Fans | Space Heaters | Steam Unit Heaters | Twin Unit Fans | Unit Ventilators | Warm Air Curtains | Whole House Ventilators, etc.

Condensate Pumps



Single phase. Class II appliance. Class F insulation. Standard & EC models. 12m discharge head. 2m lift. Flow rate 12L/hr to 120L/hr. Intermittent duty. Maximum water temperature 50°C.

Tank Pumps



Single phase. Class II appliance. Class F insulation. Maximum discharge head 3m to 6m. Flow rate 108L/hr to 180L/hr. 745cc tank capacity. Intermittent duty. Low maintenance. Water max 50°C.

Blower Wheels or Fan Impellers



Single & double inlet. Steel & aluminium. Forward curved blades. Stamped ladder or robust tablock construction. Diameters from 96mm to 300mm. Lengths from 50mm to 320mm. Shaft sleeves.

Fan Blades



One piece hubless fans and square or curved paddle blades. Plastic, aluminium or steel material. Diameters from 96mm to 510mm. Sucking & blowing airflow. Hub bores from 3/16" to 5/8".

Capacitors



Start & run 400/450V models, 1MFD to 100MFD, end stud mounting. Start only 280V models from 53/64MFD to 216/259MFD with spring steel mounting clip. Wiring by leads or 2 or 4 terminal pins.

Controls & Switches



Variable speed controllers, 7 speed auto-transformers, plain or illuminated rocker & rotary switches, thermostats, pipe and capillary thermostats. Cable assemblies with terminations and OEM plugs.

POLE STAR



Bardney Airfield | Henry Lane | Bardney | Nr. Lincoln | Lincolnshire | LN3 5TJ
tel: 01526 399 711 | fax: 01526 399 744 | email: sales@psp.uk.com



The list of heating equipment manufacturers above should not be considered complete. It is issued for guidance only and includes many companies which are no longer trading, with makes and models, names and brands, which were once familiar, now a part of history. Always use a qualified electrician when replacing electric motors or fans. Call our office if you have any technical questions.

All references to manufacturers names, model or part numbers and any depiction by photographs or drawings are solely for guidance, reference and identification. No connection, endorsement or approval by any manufacturer is either given or implied. The customer is solely responsible for ensuring correct motor suitability in intended application. Errors and omissions excepted.