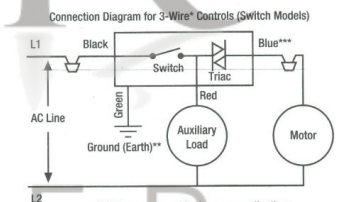
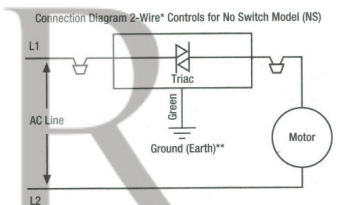
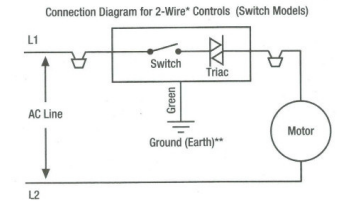
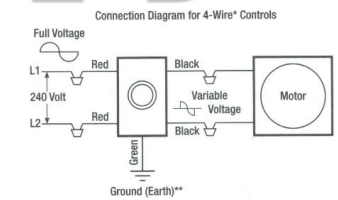


Required depth: 45.0mm



*** Wire may be white in some applications



MAX: 240V - 5.0Amp



SPECIFICATION				
Motor		Speed (RPM)		Bearings
Voltage (V)	220/240	Motor Protection		Weight (Kg)
Frequency (Hz)		Insulation Class	B	
Power In/Out (W)		Protection Class	IP42	Amb. Temp(°C)
Current (A)	5.0	Capacitor (MF)		

POLE STAR
PRODUCTS LIMITED

POLE STAR PRODUCTS LIMITED	
Product Code	
PSVSC-5A	
Projection Angle	A4
± 3°	Scale:
	Sheet: 1 of

