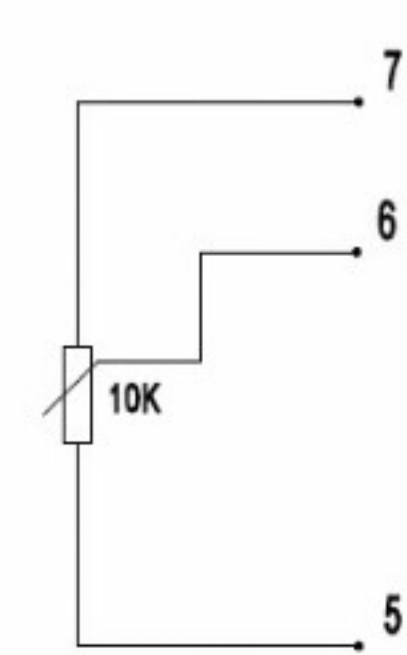
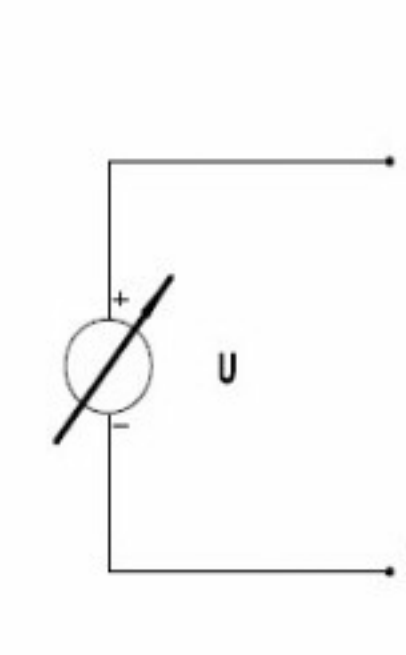


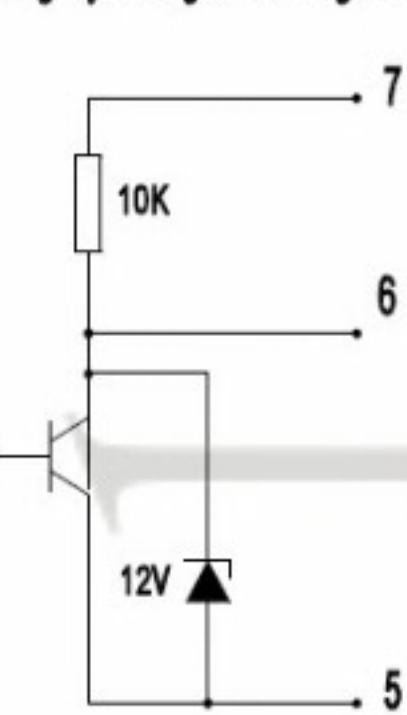
Air flow setting by using 0-10k variable resistance



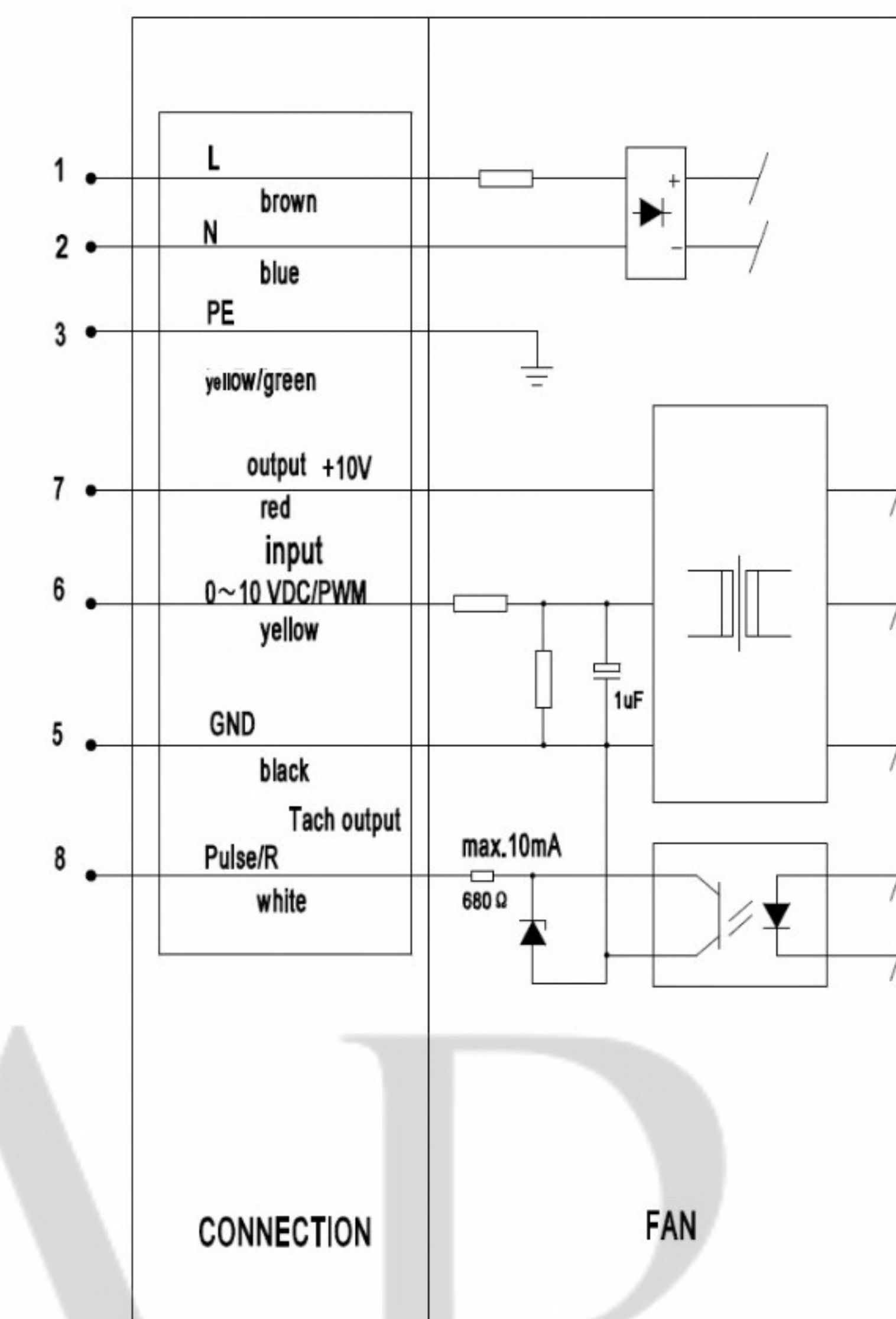
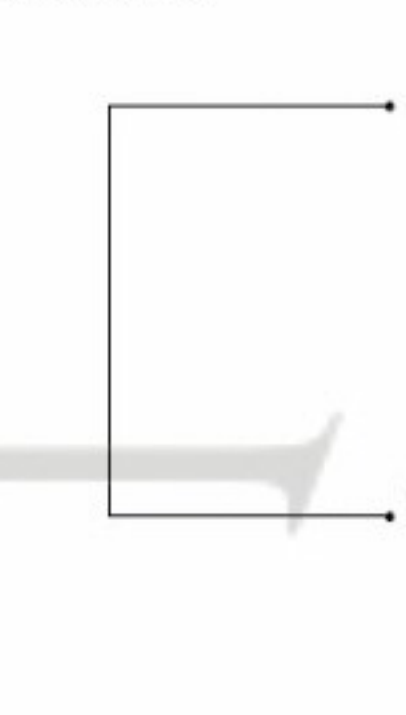
Air flow setting by using 1-10 V.DC



Air flow setting by using PWM signal



MAX. Air flow



Measured Values

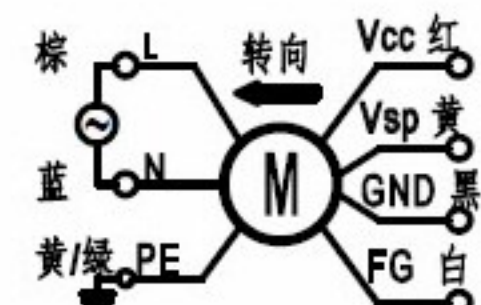
序号 No.	电压 V	转速 r/min	输入功率 W	静压		流量		序号 No.	电压 V	转速 r/min	输入功率 W	静压		流量	
				Pa	In H ₂ O	m ³ /h	CFM					Pa	In H ₂ O	m ³ /h	CFM
1	220	1618	181.9	200.4	0.80	0.0	0.0	9	220	1600	181.5	195.9	0.78	0.0	0.0
2	220	1737	192.3	177.0	0.71	480.9	282.9	10	220	1760	192.4	160.3	0.64	585.1	344.2
3	220	1855	200.3	149.4	0.60	967.3	569.0	11	220	1760	175.4	140.2	0.56	856.2	503.6
4	220	2118	209.2	120.5	0.48	1909.5	1123.2	12	220	1760	156.3	120.5	0.48	988.1	581.2
5	220	2198	212.0	90.7	0.36	2151.7	1265.7	13	220	1762	128.0	100.6	0.40	1176.6	692.1
6	220	2202	200.3	60.4	0.24	2327.4	1369.0	14	220	1761	111.2	80.9	0.32	1624.0	955.3
7	220	2200	184.0	30.9	0.12	2457.7	1445.7	15	220	1765	105.4	60.0	0.24	1701.4	1000.9
8	220	2202	166.8	0.4	0.00	2652.8	1560.4	16	220	1763	96.7	40.8	0.16	1886.9	1109.9
								17	220	1764	89.8	20.4	0.08	2028.3	1193.1
								18	220	1761	84.9	0.1	0.00	2154.4	1267.3

Pole Star Products Ltd
www.psp.uk.com

MODEL:GMA1-315B-EC
230V 50/60Hz 1.40Amp
180W 2160rpm Th.Prot CL:B
Erp 2015 η=34.8% (A,Static) N=40 N=45

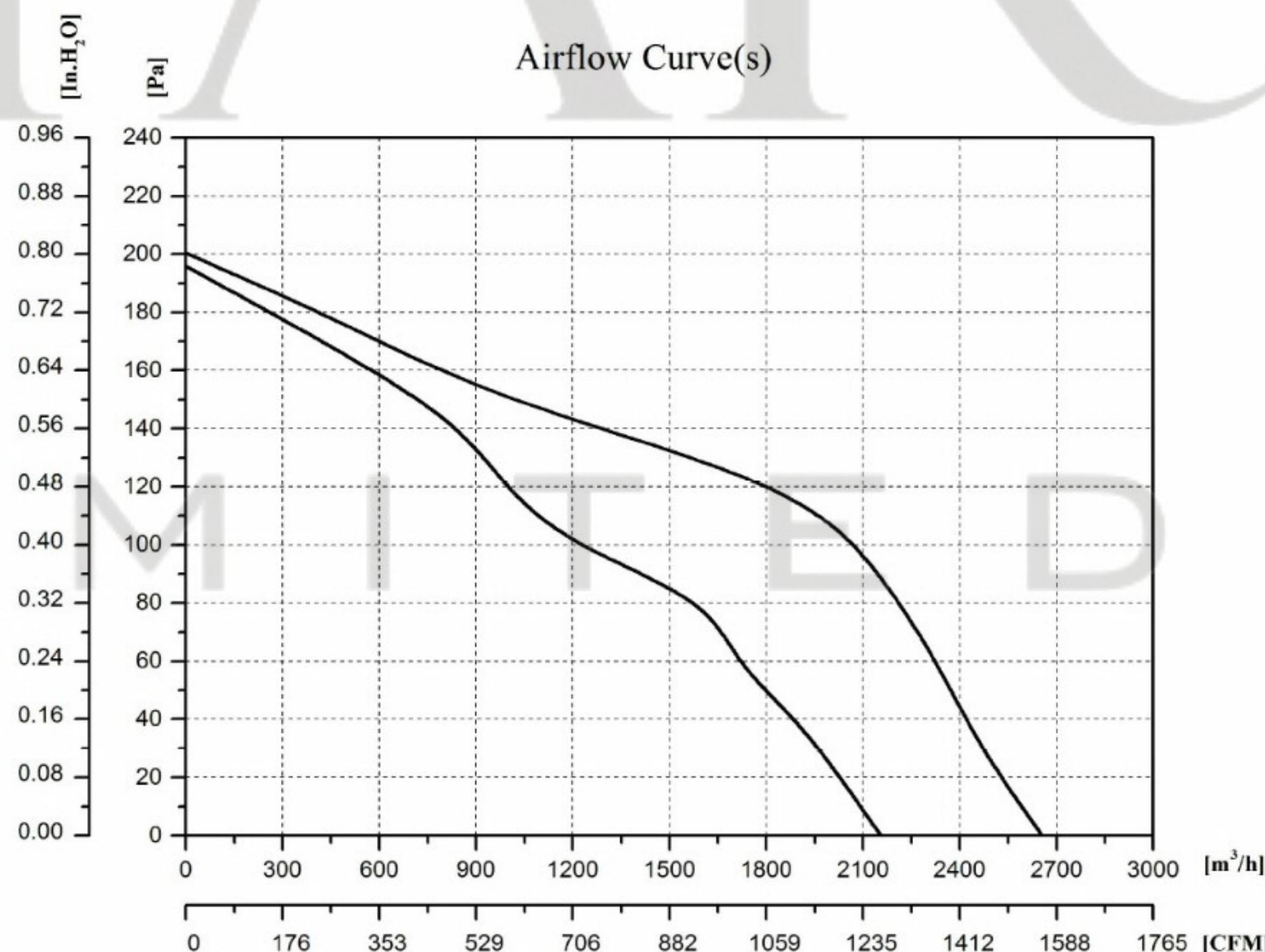


065-05B-D
001



信号名 SIGNAL	颜色 COLOR	规格 SPEC
L	棕 BROWN	AC220V/50Hz
N	蓝 BLUE	AC220V/50Hz
PE	黄/绿 YELLOW/GREEN	接地 EARTH

信号名 SIGNAL	颜色 COLOR	规格 SPEC
Vcc	红 RED	DC10V输出
Vsp	黄 YELLOW	0-10V/PWM
GND	黑 BLACK	GND
FG	白 WHITE	Pulse/R



Data according to ErP Directive:	Actual	Req.2015	Power consumption Ped:	W	209.2
Installation category:	A		Air flow qv:	m ³ /h	1909.5
Efficiency category:	static		Pressure increase P _{is} :	Pa	120.5
Overall Efficiency η _{es} :	34.67	29.38	Speed(rpm) n:	min ⁻¹	2118
Efficiency grade N:	45.29	40			
Variable speed drive:	yes		**ErP2015		

Data obtained at optimum efficiency level
The ErP data is determined using a motor-impeller combination in a standardized measurement setup

SPECIFICATION					
Motor	EC	Speed (RPM)	2160	Bearings	Ball
Voltage (V)	220/230	Motor Protection	Th.Prot.	Weight (Kg)	3.2
Frequency (Hz)	50/60	Insulation Class	B	Noise dB(A)	70
Power In/Out (W)	180	Protection Class	IP44	Airflow (m3/h)	2650
Current (A)	1.4	Ambient °C	-20°C~+60		

POLE STAR
PRODUCTS LIMITED

POLE STAR PRODUCTS LIMITED	
Product Code	GMA1-315B-EC
Projection Angle ± 3°	A4
	Scale: Sheet: 1 of